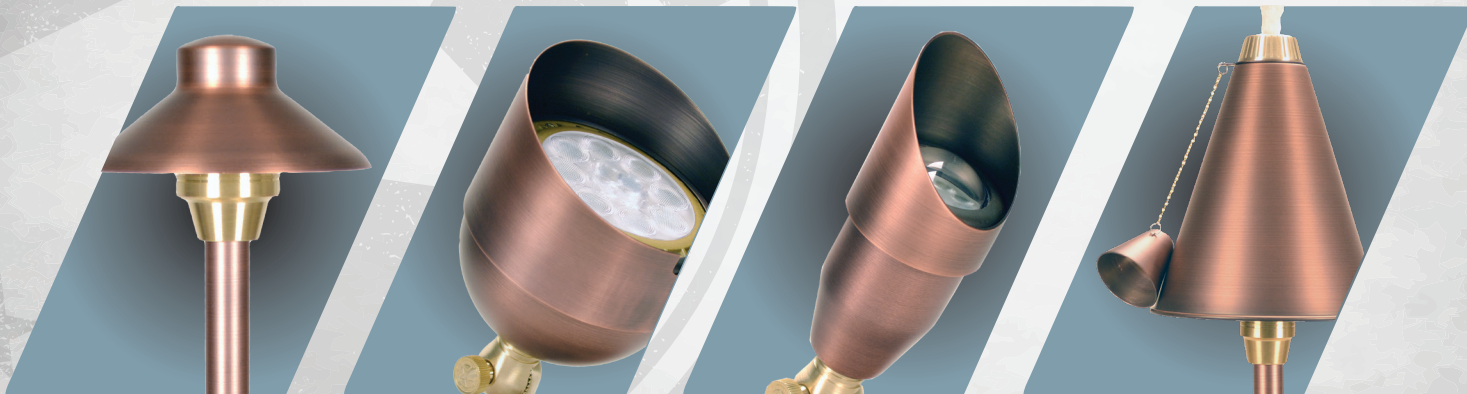


Satin Copper Finish



Unique Lighting's NEW Satin Copper finish, available on select Knights Series and Odyssey Series fixtures, bring a distinct look and feel to your landscape lighting design. The subtle hues found in the finish will improve with time due to the natural ageing process of the solid copper construction, bringing more character to the fixture and your outdoor space in the years to come. Fixtures available in *Satin Copper include: Illuminator Area Light, Guardian & Oxford Up Lights, and Islander Tropical inspired Torch Light.*



For more information on our Satin Copper finish, please visit www.uniquelighting.com • ©2020 Unique Lighting Systems



Model Number Description - Guardian, Up Light

GUAR-12-L327SC	GUARDIAN UP LIGHT, LAMPED 3W MR16 LED, 27K, 25' WIRE LEAD
GUAR-12-L427SC	GUARDIAN UP LIGHT, LAMPED 4W MR16 LED, 27K, 25' WIRE LEAD
GUAR-12-L430SC	GUARDIAN UP LIGHT, LAMPED 4W MR16 LED, 30K, 25' WIRE LEAD
GUAR-12-L527SC	GUARDIAN UP LIGHT, LAMPED 5W MR16 LED, 27K, 25' WIRE LEAD
GUAR-12-L530SC	GUARDIAN UP LIGHT, LAMPED 5W MR16 LED, 30K, 25' WIRE LEAD
GUAR-12-L827SC	GUARDIAN UP LIGHT, LAMPED 8W MR16 LED, 27K, 25' WIRE LEAD
GUAR-12-L830SC	GUARDIAN UP LIGHT, LAMPED 8W MR16 LED, 30K, 25' WIRE LEAD
GUAR-NL-OSC	GUARDIAN UP LIGHT, NO LAMP, 3' WIRE LEAD
GUAR-NL-50SC	GUARDIAN UP LIGHT, NO LAMP, 50' WIRE LEAD
GUAR-NLSC	GUARDIAN UP LIGHT, NO LAMP, 25' WIRE LEAD

Model Number Description - Illuminator 6, Area Light

I6-12-L1SC	ILLUMINATOR 6 PATH LIGHT, LAMPED 1W MR16 LED, 30K, 25' WIRE LEAD
I6-12-L27SC	ILLUMINATOR 6 PATH LIGHT, LAMPED 2W MR16 LED, 27K, 25' WIRE LEAD
I6-12-L2SC	ILLUMINATOR 6 PATH LIGHT, LAMPED 2W MR16 LED, 30K, 25' WIRE LEAD
I6-NL-OSC	ILLUMINATOR 6 PATH LIGHT, NO LAMP, 3' WIRE LEAD
I6-NL-50SC	ILLUMINATOR 6 PATH LIGHT, NO LAMP, 50' WIRE LEAD
I6-NLSC	ILLUMINATOR 6 PATH LIGHT, NO LAMP, 25' WIRE LEAD
I612-NLSC	ILLUMINATOR 6 PATH LIGHT, 12" STEM, NO LAMP, 25' WIRE LEAD
I624-NLSC	ILLUMINATOR 6 PATH LIGHT, 24" STEM, NO LAMP, 25' WIRE LEAD
I636-NLSC	ILLUMINATOR 6 PATH LIGHT, 36" STEM, NO LAMP, 25' WIRE LEAD
I648-NLSC	ILLUMINATOR 6 PATH LIGHT, 48" STEM, NO LAMP, 25' WIRE LEAD

Model Number Description - Islander, Tropical Area Light

IC-12-L1SC	ISLANDER TORCH LIGHT, 1W LED, 30K, 25' WIRE LEAD
IC-12-L27SC	ISLANDER TORCH LIGHT, 2W LED, 27K, 25' WIRE LEAD
IC-12-L2SC	ISLANDER TORCH LIGHT, 2W LED, 30K, 25' WIRE LEAD
IC-NL-OSC	ISLANDER TORCH LIGHT, NO LAMP, 3' WIRE LEAD
IC-NL-50SC	ISLANDER TORCH LIGHT, NO LAMP, 50' WIRE LEAD
IC-NLSC	ISLANDER TORCH LIGHT, NO LAMP, 25' WIRE LEAD
IC12-NLSC	ISLANDER TORCH LIGHT, 12" STEM, NO WIRE LEAD, 25' WIRE LEAD
IC24-NLSC	ISLANDER TORCH LIGHT, 24" STEM, NO WIRE LEAD, 25' WIRE LEAD
IC36-NLSC	ISLANDER TORCH LIGHT, 36" STEM, NO WIRE LEAD, 25' WIRE LEAD
IC48-NLSC	ISLANDER TORCH LIGHT, 48" STEM, NO WIRE LEAD, 25' WIRE LEAD



Model Number Description - Oxford, Up Light

OXFO-12-L1327SC	OXFORD UP LIGHT, 13W LED, 27K, 25' WIRE LEAD
OXFO-12-L1330SC	OXFORD UP LIGHT, 13W LED, 37K, 25' WIRE LEAD
OXFO-12-L527SC	OXFORD UP LIGHT, 5W LED, 27K, 25' WIRE LEAD
OXFO-12-L530SC	OXFORD UP LIGHT, 5W LED, 30K, 25' WIRE LEAD
OXFO-12-L727SC	OXFORD UP LIGHT, 7W LED, 27K, 25' WIRE LEAD
OXFO-12-L730SC	OXFORD UP LIGHT, 7W LED, 30K, 25' WIRE LEAD
OXFO-NL-OSC	OXFORD UP LIGHT, NO LAMP, 3' WIRE LEAD
OXFO-NL-50SC	OXFORD UP LIGHT, NO LAMP, 50' WIRE LEAD
OXFO-NLSC	OXFORD UP LIGHT, NO LAMP, 25' WIRE LEAD

