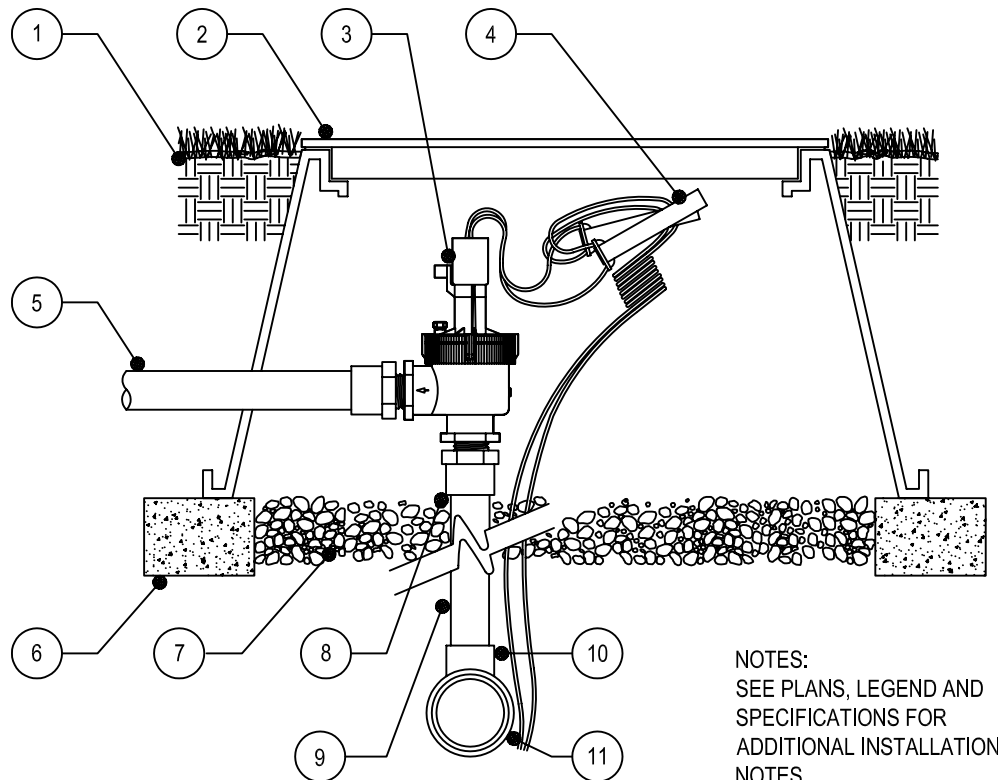




TORO-IRRIGATION DIVISION  
 5825 JASMINE STREET  
 RIVERSIDE, CA 92504  
 TOLL FREE: 1-800-664-4740  
 PHONE: (951) 785-3152  
 FAX: (951) 359-1870  
 www.toro.com

**LEGEND**

1. FINISHED GRADE
2. VALVE BOX & COVER
3. TORO FxF REMOTE CONTROL ANGLE VALVE WITHOUT FLOW CONTROL AND WIRED SOLENOID MODEL NO. EZF-08-04
4. CONTROL WIRES WITH 12" MIN. SERVICE COIL AND WATERPROOF WIRE SPLICE CONNECTORS
5. PVC PIPE LATERAL LINE SEE SPECS. FOR DEPTH
6. CONTINUOUS BRICK SUPPORTS
7. GRAVEL (1 CU. FT.)
8. PVC MALE ADAPTER
9. PVC MAIN LINE LENGTH AS REQUIRED
10. PVC TEE OR ELBOW (TYP.)
11. PVC MAIN LINE (TYP.) SEE SPECS. FOR DEPTH

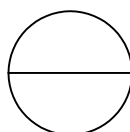


NOTES:  
 SEE PLANS, LEGEND AND SPECIFICATIONS FOR ADDITIONAL INSTALLATION NOTES.

**SECTION/ELEVATION**  
 NOT TO SCALE

**NOTES:**

1. INSTALLATION TO BE COMPLETED IN ACCORDANCE WITH MANUFACTURERS SPECIFICATIONS.
2. DO NOT SCALE DRAWINGS.
3. CONTRACTORS NOTE: FOR PRODUCT AND COMPANY INFORMATION VISIT [www.CADdetails.com/info](http://www.CADdetails.com/info) REFERENCE NUMBER 065-165b.



**EZ-FLO<sup>®</sup> PLUS SERIES**

1" PLASTIC VALVE (FxF, ANGLE, WIRED SOLENOID) - WITHOUT FLOW CONTROL