

TORO®

PRO SERIES™ SOIL SENSOR



Automate or manually adjust irrigation based on moisture level trends in the soil, using the Toro® Pro Series™ Soil Sensor – a wireless soil moisture sensor that works in conjunction with the Toro Sentinel® central irrigation control system, measuring at depths up to three and a half feet below the surface of the soil.

FEATURES & BENEFITS

Wireless Communication

The wireless radio communication from the sensor to the controller “base station” means no trenching or wiring required.

Ultimate Flexibility

The unique design of the probe incorporates a tether that allows measurements to be taken anywhere from just below grade to upwards of three and a half feet below the surface, making it suitable for anything from turf to large trees or anything in between.

Maximum Control

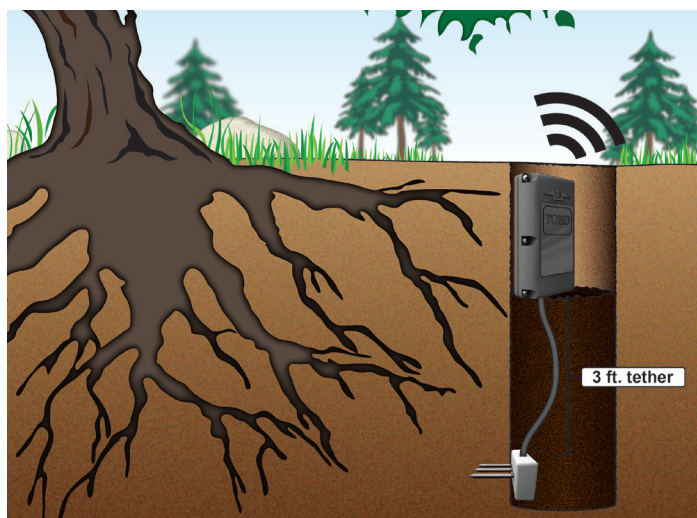
Up to 16 sensors can be used with any Sentinel controller, transmitting real-time moisture data every 5 minutes.

Easy Installation

All “V3” Sentinel controllers come standard with the port that accepts the Pro Series receiver, allowing for “plug and play” upgrades. The sensor can either be completely buried in soil for greater vandal resistance or installed in a valve box for easier servicing.

Proven Technology

The Toro Pro Series Soil Sensor leverages both hardware and proprietary programming used for over a decade on golf courses and high-profile sports fields.



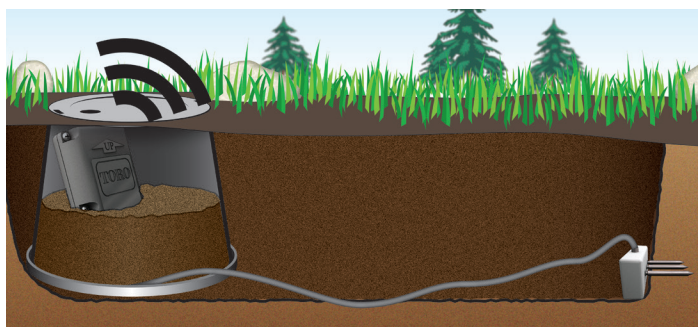
Deep Root Installation



PRO SERIES™ SOIL SENSOR



Shallow Root Installation



Valve Box Installation



Easily connects to Sentinel controllers for "plug and play" setup.

SPECIFICATIONS

Operational

- Works with Sentinel central control system to adjust watering
- Up to 16 sensors per controller
- Leverages Turf Guard® wireless communication technology
- Compatible with Turf Guard repeaters to extend range
- Replaceable battery (lasts up to 3 years after installed)
- Durable sensor housing is resistant to aeration damage
- Sensor reading sent every 5 minutes
- Automatic network configuration
- Graphical system overview displays moisture data at-a-glance
- Ability to work in conjunction with ET-based control

Electrical & Wireless

- Buried Sensor Range: Up to 500' line-of-sight
- Repeater Range: Up to 2,000' line-of-sight
- 900 MHz ISM Band FHSS communication
- Additional licensing not required
- Input power for receiver: - <.02A @ 6 VDC from controller

Dimensions

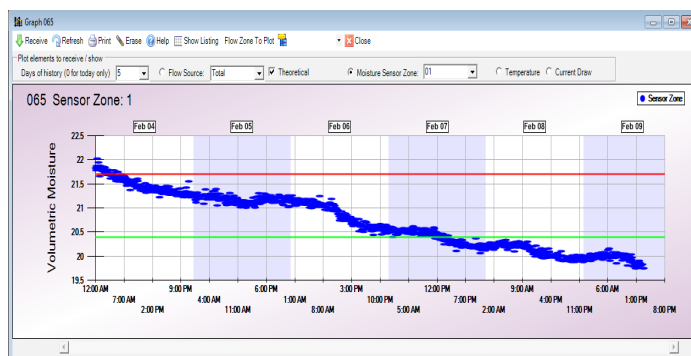
- Body: 2" x 3⁵/₈" x 6¹/₈"
- Sensor Spikes: 1³/₄" x 3¹/₁₆"
- Tether Length: 3'
- Installation Hole Diameter: 4¹/₄"

Additional Options

- Toro Pro Series Soil Sensor wireless receiver (TPS-RX)
- External wireless repeater (TG-R-EXT)
- Internal wireless repeater (TG-R-INT)

Warranty

- Two year standard warranty



Set upper and lower moisture level "trip points" in Sentinel to control when irrigation is allowed, and view trends over time

Specifying Information—Pro Series™ Soil Sensor

Model	Description
TPS-SS	Toro Pro Series Soil Sensor
TPS-RX	Toro Pro Series Internal Receiver



www.toro.com • The Toro Company • Irrigation Division

5825 Jasmine St. Riverside, CA • 92504 • 877-345-8676

Specifications subject to change without notice. For more information, contact your local Toro distributor. ©2015 The Toro Company. All rights reserved.
P/N 15-1135-IRC