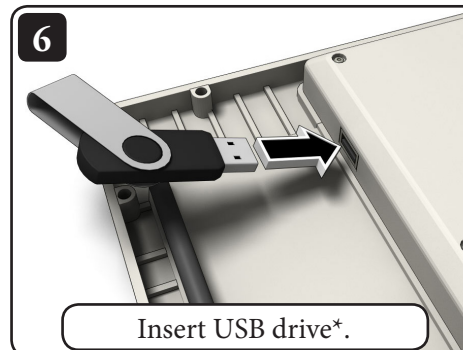
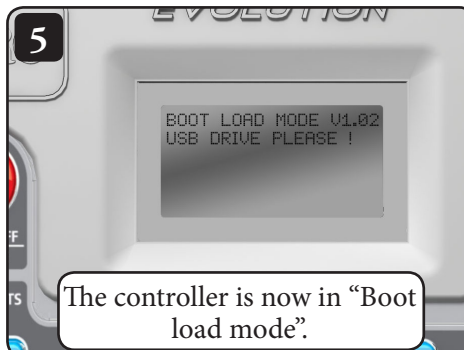
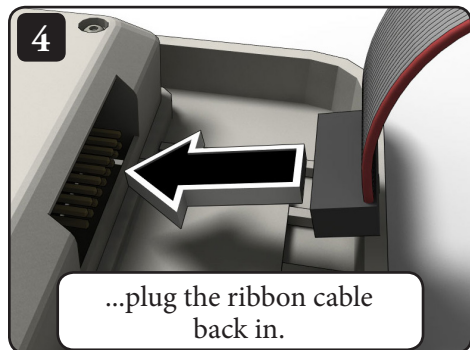
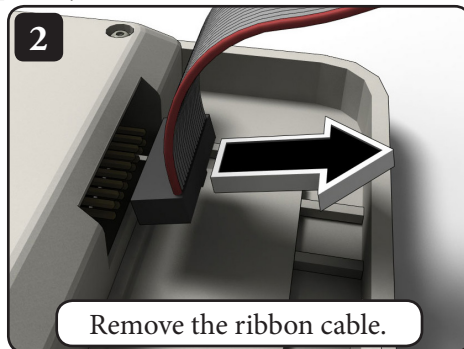
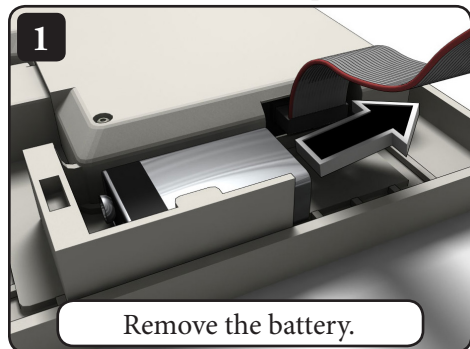




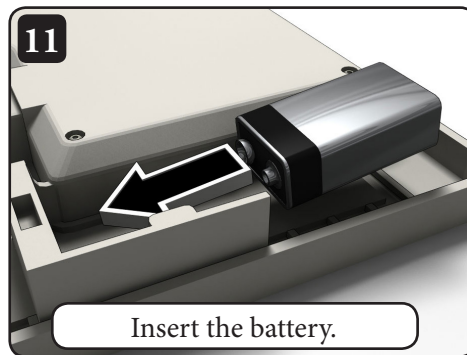
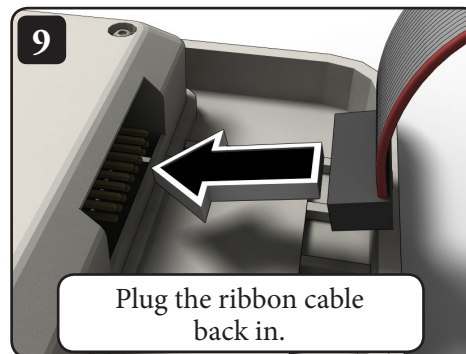
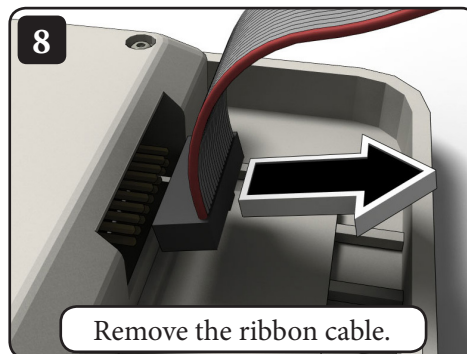
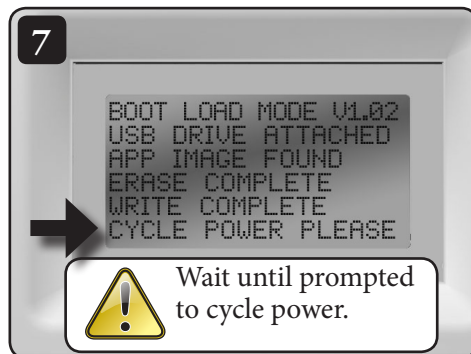
Count on it.

EVOLUTION[®] Series Controller: *Updating Firmware for versions 2.0 and earlier*

Follow this procedure to update your EVOLUTION controller with Smart Connect[®] capability.



*See EVOLUTION Series controller user guide for instructions on loading *new* firmware on USB drive.



Your EVOLUTION controller is now ready to work with Smart Connect.



To view a video demonstrating the firmware upgrade procedure, please go to:
www.toro.com/evolution (US & Canada)
www.toroevolution.com (int'l).

Technical Support:

1-877-345-8676
(USA & Canada)

evolution@toro.com
(international)