

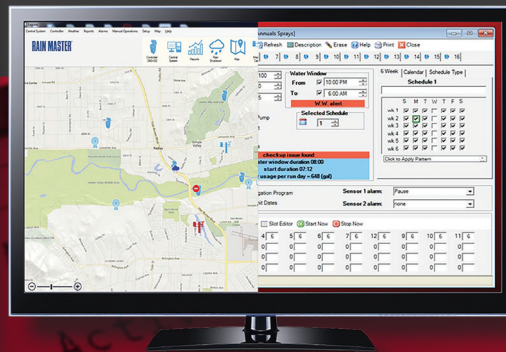
TORO®

TORO® DXi™

The Controller Platform of the Future.



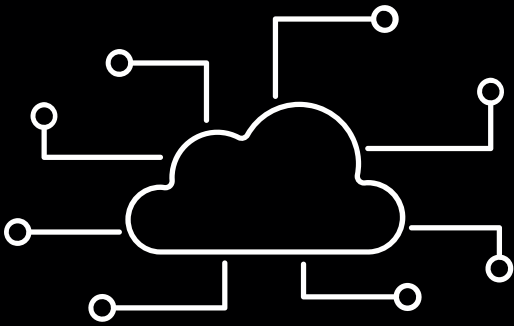
Two Powerful Software Packages.
One Advanced Controller Platform.



Advanced Central Control Satellite Powered by
Rain Master® Laguna™ Landscape Management Software or Toro Sentinel® Water Management Software (WMS).

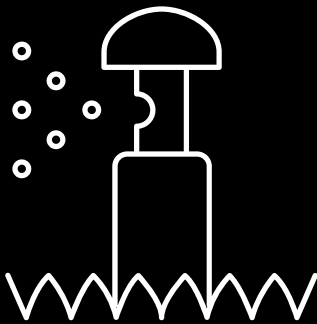
Precision Meets Convenience.

Whether it's an upgrade to an existing system or a new build or site, DXi™ opens up the possibilities for greater precision and control with integrated management software.



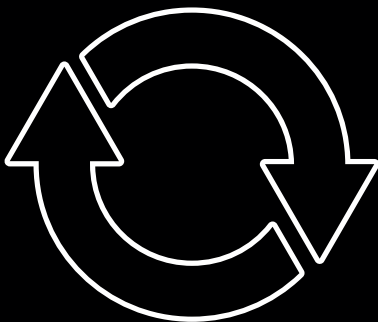
Cloud-Based Irrigation Management

Operate stations and programs from anywhere, anytime with your mobile device. It's simple with the free ProMax™ Connect mobile app.



New Precision Management Capabilities

Harness the power of a range of capabilities, from basic irrigation scheduling to advanced ET calculations, flow sharing and flow management.



Flexibility for Future Updates

The future-ready DXi controller platform is designed to accommodate new innovations and changing site needs quickly and economically.

DXi Built to Order.

Choose from a variety of configuration options, including conventional irrigation, 2-wire or both (hybrid). Multiple wall-mount and pedestal enclosure options are available to suit different needs and installation sites, and first-rate surge/lightning protection is standard on all cabinets.



Electronic Paper-Style LCD Display

Provides better visibility in heavy sunlight and includes an integrated LED backlight for low-light conditions.



Intuitive Soft Keys

Familiar and easy to use for screen selection.



Indicator LEDs

Show when specific functions are taking place.



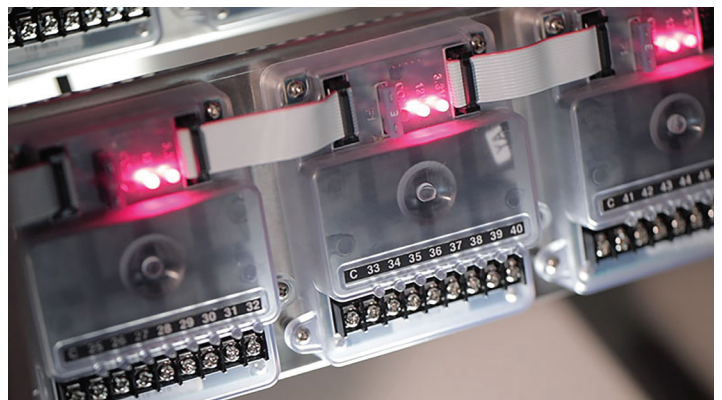
In-Cabinet Illumination

Makes maintenance easier in low-light conditions.



Pivoting Mounting Brackets

Makes in-field installation and maintenance less cumbersome.



Custom-Fit Clear Electrical Board Covers

Allows quick, at-a-glance wiring identification and connection verification while protecting against unwanted pests.

Enhanced Watering Possibilities.

Looking for a variety of adaptable watering options?

DXi™ delivers with a comprehensive selection.* In addition, DXi satellites allow for precision control and water management add-ons, such as the ability to manage multiple flow sensors and master valve pumps. They also support Toro flow and moisture decoders.



- Up to 16 programs
- Up to 12 start times per program (8 for WMS)
- Up to 48 “omit days”
- Two customizable establishment programs (Laguna)

**Exact feature set varies by central control. Consult full product specifications for details.*



10 Years of Built-In Cellular Service.

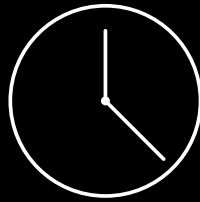
The DXi™ satellite offers mobile connectivity and supports cellular communication with no initial service subscription required. Customers receive 10 years of built-in cellular service with the purchase of a cellular controller kit.

No competitor offers this without additional charges.

DXi satellites are also Cloud Connect compatible, which enables:



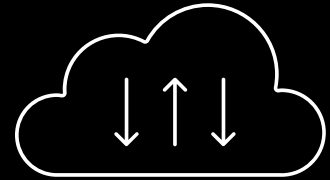
Remote Firmware Updates ✓



More Robust and Timely Reports and Diagnostics ✓



In-field Data Management — No Need to Be Tied to the Office ✓



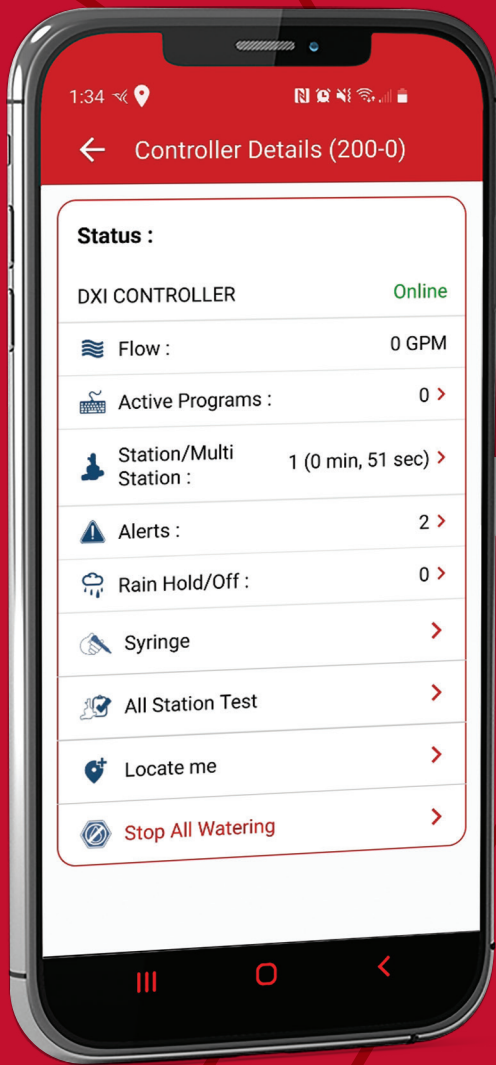
Simultaneous Communication to all Controllers

Multiple Communication Options.

With DXi, you can choose from multiple forms of communication between the controller and central control software, including cellular, ethernet, ethernet-to-radio, UHF radio, and Wi-Fi. DXi satellites are also compatible with the ProMax Maintenance Remote, which allows controllers to be operated remotely from watering zone sites using a hand-held transmitter.



Ethernet | Radio | Wi-Fi | Cellular



ProMax™ Connect App



Cloud-Based Control with the ProMax™ Connect App.

Activate single or multiple stations, monitor real-time flow rates, create and activate a one-time program “syringe,” and much more with the ProMax™ Connect app.** This free, cloud-based remote maintenance tool also allows you to manage rain holds, alerts and all-station tests, in addition to viewing local weather information at each satellite.

**The DXi controller must be connected to the Cloud Connect server to use the ProMax Connect app.

TORO

dxi.toro.com

5825 Jasmine Street
Riverside, CA 92504-1183

©2021 The Toro Company
All Rights Reserved

PN: 21-1198-IRC

We reserve the right to improve our products and make changes in the specifications and designs without notice and without incurring obligation.

Products depicted in this brochure are for demonstration purposes only. Actual products offered for sale may vary in design and features.

Watch to Learn More:



facebook.com/Toro.Company
twitter.com/thetorocompany
youtube.com/toro