

TORO**DXi™ CENTRAL CONTROL SYSTEM FOR RAIN MASTER® LAGUNA™**

Toro DXi Central Control Satellite is a single powerful hardware platform capable of supporting two powerful software packages, Rain Master® Laguna™ or Sentinel® Water Management Software (WMS). DXi comes loaded with features to make precise water management convenient and flexible. **Cloud-Based Data Management** simplifies irrigation management with access from anywhere, anytime. **Enhanced Features** and new precision irrigation management capabilities make water management, scheduling and monitoring adaptable to site specific or user specific needs. And the **Future Ready** hardware platform means the DXi can accommodate new innovations and changing site needs quickly and economically.

FEATURES & BENEFITS

Convenient Mobile Access

The free ProMax™ Connect app offers irrigation managers access to DXi controllers from anywhere, anytime.

Build to Order

Comes in a variety of configurations, from multiple enclosure options, to multiple irrigation methods: conventional, 2-wire or hybrid.

Multiple Communication Options

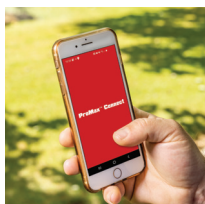
Including cellular; cellular communication kits include 10-years of service with no initial service subscription.

Range of Functionality

DXi offers a wide range of functionality, from basic irrigation scheduling to ET, Flow-Sharing and Flow Management.

Evolve at your own Pace

Current Laguna and WMS users can retrofit their existing irrigation controllers without having to replace the central software.



PRODUCT HIGHLIGHT

DXi™ Central Control System

Advanced Central Control Satellite

Toro® DXi satellite, is one of the most advanced, easy to use controllers on the market. Its “Automatic Intelligence” takes corrective action when certain system issues arise, ensuring, the water management professional is equipped with the ultimate flexibility in “smart” irrigation central control and the water management tools to maximize returns on any project.

Additional Features for Laguna™ Configuration

- ✓ 8-96 stations conventional/200 stations 2-wire
- ✓ Hybrid option available*
- ✓ Built to order with many configurations to choose from
- ✓ 16 programs + independent station control (ISC)
- ✓ 12 start times per program
- ✓ 2 customizable establishment programs & up to 48 “omit day(s)”
- ✓ Dedicated port for up to 3 master valves, 3 flow sensors & 2 pumps
- ✓ 6 auxiliary sensor ports
- ✓ Compatible with 2-Wire Moisture Sensor
- 1 ✓ “Electronic paper-style” LCD display for use in heavy sunlight, integrated LED backlight for dark conditions (superior contrast level)
- 2 ✓ Innovative soft keys for screen
- 3 ✓ Specific functions & LED “ring” indicators
- 4 ✓ Custom-fit clear covers for all electrical boards
- 5 ✓ Pivotech™ pivoting bracket for easy installation (SPED and PSB only)
- ✓ Innovative “fridge light” cabinet illumination (see next page)
- ✓ Nonvolatile memory
- ✓ Industrial lightning/surge protection comes standard
- ✓ 5-year limited warranty

*48-Station Conventional output + 152-Station 2-wire output in SPED enclosure



1 “Electronic Paper-style” LCD Display

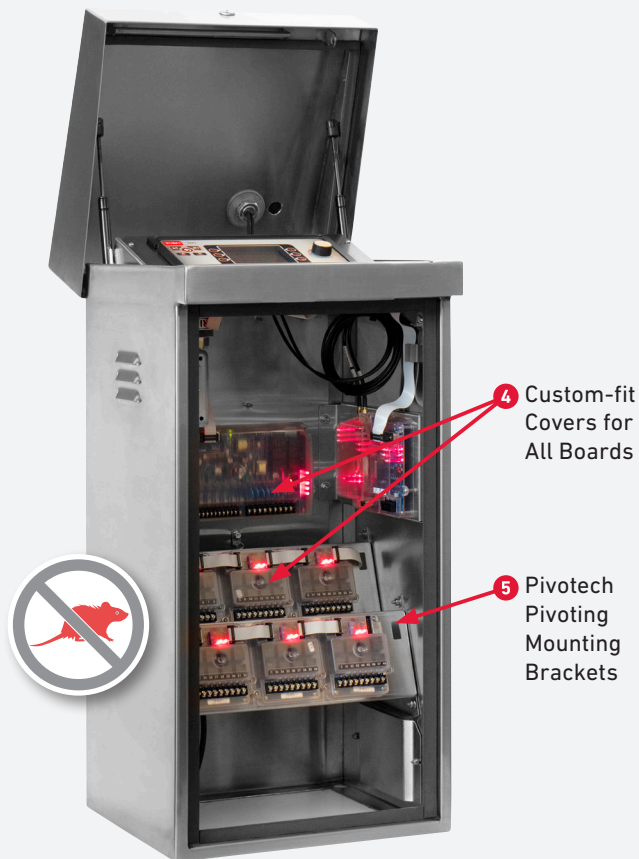
2 Soft Keys

3 Indicator LED

Communication Options

- ✓ Cellular (ProMax Connect Compatible)
- ✓ Serial
- ✓ Ethernet (ProMax™ Connect Compatible)
- ✓ Ethernet-to-radio
- ✓ UHF Radio
- ✓ Wi-Fi (ProMax Connect Compatible)

Pivoting Bracket for Easy Installation



DXI™ CONTROLLER SPECIFICATION

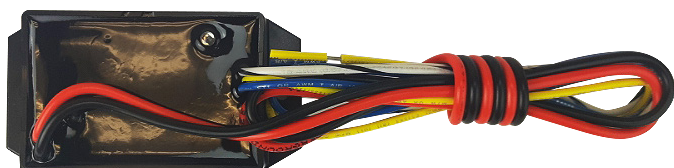
Firmware for Central Control Configuration*	
DXi-FMW-LAGUNA	For Rain Master Laguna Central System Only
Controller Model	
DXi-	DXi Irrigation Controller
Enclosure Type	
PWM	Painted Wall Mount Enclosure
SWM	Stainless Steel Wall Mount Enclosure
SPED	Stainless Steel Pedestal Enclosure, Type 1
PSB	Stainless Steel Pedestal Enclosure, Type 2
PPED	Plastic Pedestal Enclosure
DPSB	Stainless Steel Pedestal Double Wide Enclosure
Station Count	
TW	200-Station 2-Wire Output Gateway
08	8-Station Conventional Output
16	16-Station Conventional Output
24	24-Station Conventional Output
32	32-Station Conventional Output
40	40-Station Conventional Output
48	48-Station Conventional Output
56	56-Station Conventional Output, DPSB Enclosure Only
64	64-Station Conventional Output, DPSB Enclosure Only
72	72-Station Conventional Output, DPSB Enclosure Only
80	80-Station Conventional Output, DPSB Enclosure Only
88	88-Station Conventional Output, DPSB Enclosure Only
96	96-Station Conventional Output, DPSB Enclosure Only
HY08	8-Station Conventional Output w/TW Output Gateway, SPED Enclosure Only
HY16	16-Station Conventional Output w/TW Output Gateway, SPED Enclosure Only
HY24	24-Station Conventional Output w/TW Output Gateway, SPED Enclosure Only
HY32	32-Station Conventional Output w/TW Output Gateway, SPED Enclosure Only
HY40	40-Station Conventional Output w/TW Output Gateway, SPED Enclosure Only
HY48	48-Station Conventional Output w/TW Output Gateway, SPED Enclosure Only
Communication Add-on	
M8C	Cellular Kit with Antenna (Includes 10-years of Service)
M8W	Wi-Fi Kit with Antenna
M8U	UHF Radio Kit with Antenna
Other Add-on	
P	ProMax™ Remote Receiver Kit

* Each DXi order must include the firmware version SKU.

SAMPLE SPECIFICATION

Example: DXI-FMW-LAGUNA + DXI-SPED48M8CP

Laguna configured DXi 48-station controller in stainless steel pedestal (SPED), cellular kit with antenna and 10-years communication service, and ProMax permanent mount remote receiver with antenna.



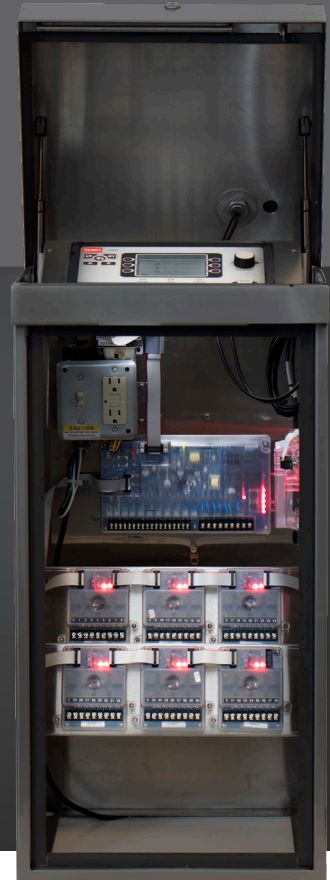
SPECIFICATIONS

Electrical

- Input power: 100-120VAC, 50/60HZ
- Output power: 24VAC, 2.75 amps max total draw @ 140°F (60°C), 2.5 amps max per station/pump/master valve
- Transformer: 24VAC, 100VA
- UL, CUL & FCC approved

Dimensions

- PWM: H:23" W:19" D:8"
- SWM: H:23" W:19" D:9"
- SPED: H:35" W:16" D:14"
- PSB: H:38" W:16" D:15.5"
- DPSB: H:38" W:24" D:17"
- PPED: H:35" W:16" D:14"



“Fridge Light” Cabinet Illumination*

*Standard in all models

AC Decoder Highlights

- ✓ Wire fault detection automatically shuts down valve
- ✓ Easy-to-read LED status indication for every command
- ✓ LED also displays valve activation and diagnostic reporting
- ✓ Troubleshooting capabilities:
 - LED decoder “active” indication
 - LED valve power “on” indication
 - Two-way communication verification

2-WIRE DECODERS AND ACCESSORIES MODEL LIST

Model	Description
TW-D-1	Single valve AC decoder
TW-D-2	Dual valve AC decoder
TW-D-4	Quad valve AC decoder
TW-LA-1	Lightning arrester
TW-CAB-14	14 AWG polycoated 2-wire
TW-SPLICE-14	14 AWG water-tight splices
TW-PROG	Portable decoder programmer
TW-DAC-FLOW	Flow sensor decoder
TW-DAC-SOIL	Moisture sensor device

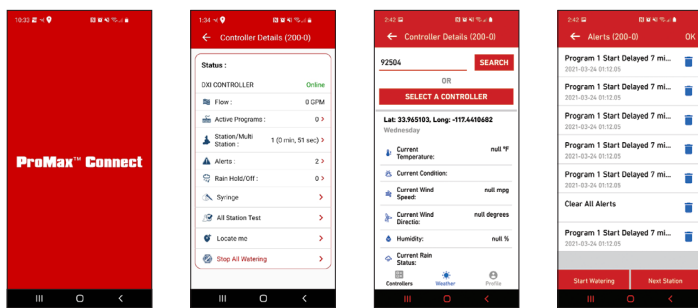


PROMAX™ Connect

The ProMax Connect App is a free cloud-based maintenance remote tool that allows users to operate stations and programs. With a simple and user-friendly interface, troubleshooting field issues can be performed with ease from your mobile device. ProMax Connect is available for download on the Google™ Play Store and Apple® App Store®.

Additional Features

- ✓ Valid Program Activation
- ✓ Single or Multi-Station Activation
- ✓ Monitor Real-Time Flow Rates
- ✓ Rain Hold Management
- ✓ Create & Activate a One-Time Program “Syringe”
- ✓ Monitor and Manage Alerts
- ✓ All Station Test Implementation & Management
- ✓ View Local Weather in Real Time



*Google Play store and Apple App Store are trademarks or registered trademarks of their respective companies in the United States and other countries.

Specifying Information—Laguna Central Control System

Model	Description
LAGUNA-CENTRAL	Full Laguna Software
LAGUNA-COMPUTER	Computer System and Accessories (Laguna software not included)
LAGUNA-LITE	Full Laguna Software (15 sub-master limit and 1 weather source)
LAGUNA-SEAT-LIC	Extra Seat License for Existing Laguna User
LAGUNA-EVUPG	Upgrade to Laguna from EV2000
LAGUNALITE-EVUPG	Upgrade to Laguna Lite from EV2000 Lite
DXi-RAD-BV	DXi Base Station Radio with Antenna
DXi-ETHER-RF-RPTR	DXi Ethernet to Radio Base Station with Antenna
363-6818	25 Foot Serial Communication Cable (Central to Radio/Submaster)
363-6819	50 Foot Serial Communication Cable (Central to Radio/Submaster)

POWERED BY LAGUNA™

The Rain Master® Laguna™ Central Control System, combines innovative irrigation water management tools with proven system hardware. Laguna offers a variety of optional advanced modules that address a variety of water management challenges. VP mapping tools provide an easy way to locate and program DXi™ infield controllers, weather sources and other devices using zoom features. Highlight any DXi controller and launch programming screens, view alerts, or manually turn on stations with a click.

Notable Features

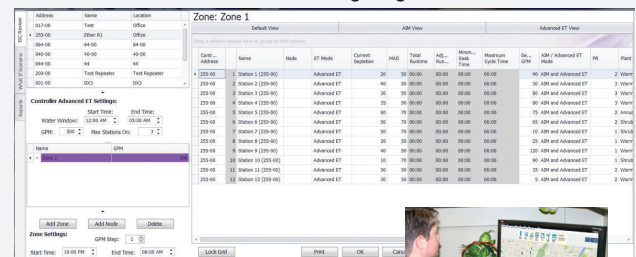
- ✓ Built to run on newer operating systems, such as Windows® 10*
- ✓ Software updates over the internet
- ✓ Internet based mapping (Road or Aerial)
- ✓ Dynamic activity log allows operation statuses to be viewed
- ✓ ET source from weather station, CIMIS or online ET data
- ✓ Simultaneous port communication for faster service
- ✓ Grid and table editing for user customization
- ✓ Customize plant & soil types, as well as flow meters
- ✓ Virtual Machine (VM) compatible

Advanced ET and AIM

- ✓ Utilizes water budget scheduling method
- ✓ Provides complete water use accountability
- ✓ Irrigation schedule based on plant requirements
- ✓ Generates water usage projections
- ✓ Optimize scheduling efficiency and system performance
- ✓ Extensive system flow management
- ✓ Global programming functions

*Windows is a registered trademark of Microsoft Corp.

Advanced ET and AIM Scheduling Engine



We reserve the right to improve our products and make changes in the specifications and designs without notice and without incurring obligation. Products depicted in this brochure are for demonstration purposes only. Actual products offered for sale may vary in design and features.



www.toro.com

The Toro Company • Irrigation Business • 5825 Jasmine St. • Riverside, CA • 92504 • 877-345-8676

Specifications subject to change without notice. For more information, contact your local Toro distributor. ©2021 The Toro Company. All rights reserved. PN: 21-1196-IRC