



TORO[®]



TORO



TORO

2025

SITWORKS

EQUIPMENT RANGE

MATERIAL HANDLING / COMPACT UTILITY LOADERS / TRENCHERS
STUMP GRINDERS / TURF RENOVATION / SPECIALTY EQUIPMENT



S I N C E 1 9 1 4
COUNT ON IT.

Looking forward is in our blood. We've been doing it for over a hundred years. That's how we've built unbreakable trust with you, the people and partners who share our ambition. From sun-up to sundown and any task, any season, Toro equips you to get every outdoor job done, day in and day out. We lead. Everyone else follows.

We are always pushing to be the First and the Next. The collective will and skill of past, present, and future Toro innovators — along with our customers' commitment to caring for the land — is what flows through that unmistakable, trailblazing Toro Red Bloodline.

Our brand is accelerating change in the industry. Alternative power sources, smart products that improve people's lives, even software platforms that help manage outdoor businesses better. We're doing it all.

We will always be there for our customers to help customers enrich the beauty, productivity and sustainability of the land with our leadership, innovation and superior customer care. Count on It.

[toro.com](https://www.toro.com)

FROM START TO FINISH

From hardscape to landscape to mowing, our portfolio has you covered with a full range of solutions for the jobs you need to do. No matter what the Toro product, our entire line is designed with input from grounds professionals – and our work is never finished. Our agronomists and engineers continually work on new solutions to increase productivity, conserve water, reduce fuel consumption and improve growing conditions.

The result is a line of products that offers ease of use for operators at every skill level, durability to handle tough conditions and reliability to minimise downtime and keep your operators productive. Plus, it's all backed by service and support from local Toro distributors who are dedicated to helping customers succeed.

100+
years focused on
GROUNDS CARE

>3%
of total revenue
SPENT ON R&D

5,000+
dealers worldwide
TO SERVE YOU

With deadlines to meet, operators at every skill level and not enough time for service calls, you need products you can count on. Toro equipment gives you the durability to handle tough conditions and the reliability to keep your operators productive. And it's all backed by service and support from a local distributor who cares about your success.

At Toro, we understand the challenges that you face every day because we've been there and we never stop listening to our customers. That means every product we make is designed to meet your needs.

Explore the full line of Toro products for grounds professionals at toro.com and contact your local Toro distributor to learn more.

400+
patents around the world
ON TORO INNOVATIONS



Listening to the industry

Groups of grounds professionals come to Toro's US headquarters to discuss their needs and experiences with Toro engineers and staff. **We take that feedback and use it to develop new features and make our products better.** Continuous improvement always drives us forwards.



Investing in research

Toro is **committed to investing in product development.** Through our Centre for Advanced Turf Technology, leading agronomists and engineers **continually work on new solutions** to increase productivity, conserve water, reduce fuel consumption and improve growing conditions.



Fit for all types of environment

Toro equipment is used on some of the world's finest golf courses and sports fields, but it's also used in **all kinds of tough applications**, from parks and roadside maintenance to landscape projects and university campuses.



Your true partner

Our goal is to be more than a supplier. **We want to be the partner you go to for solutions that your business needs.** From day one, Toro has been a company built on treating customers with fairness and respect. Simply put, relationships matter to us.



Supporting contractors

We stand behind our products with service and support at local distributors. And we support many associations that help advance the industry.



Heritage

For more than 100 years, The Toro Company has **focused on making equipment to maintain grounds and landscapes.** From operator productivity to promoting healthy grass to conserving precious resources, our roots are in caring for the land.

DINGO®

SELECTION GUIDE

Save labour, do more and finish faster. Think of all the tasks you have to tackle every day. Now imagine how much faster you could do them with a Toro® Dingo®. Delivering all-day power, jobsite durability and the compact hauling capacity your crew needs, Toro Dingo compact utility loaders are a productivity-boosting alternative to manual labour and other earthmoving equipment – especially in tight, hard-to-reach spots. Patented, customer-favourite traction controls make these machines effortless to operate, no matter what your experience level. And now our full lineup offers more choices than ever. Whether you want wheels or tracks, petrol, diesel or electric, radial, vertical or telescoping lift arms, or specific attachments, there's a Dingo that's right for you.



Handle virtually any task

The Dingo works with a wide range of available attachments. You can do anything from augering, earth moving, tilling and trenching to levelling, lifting, hauling and demolishing with one machine. Plus, with our full lineup, you can choose from petrol or diesel models with tracks or wheels to fit the jobs you need to do.



D I N G O ® S E L E C T I O N G U I D E

WHEELED MODELS



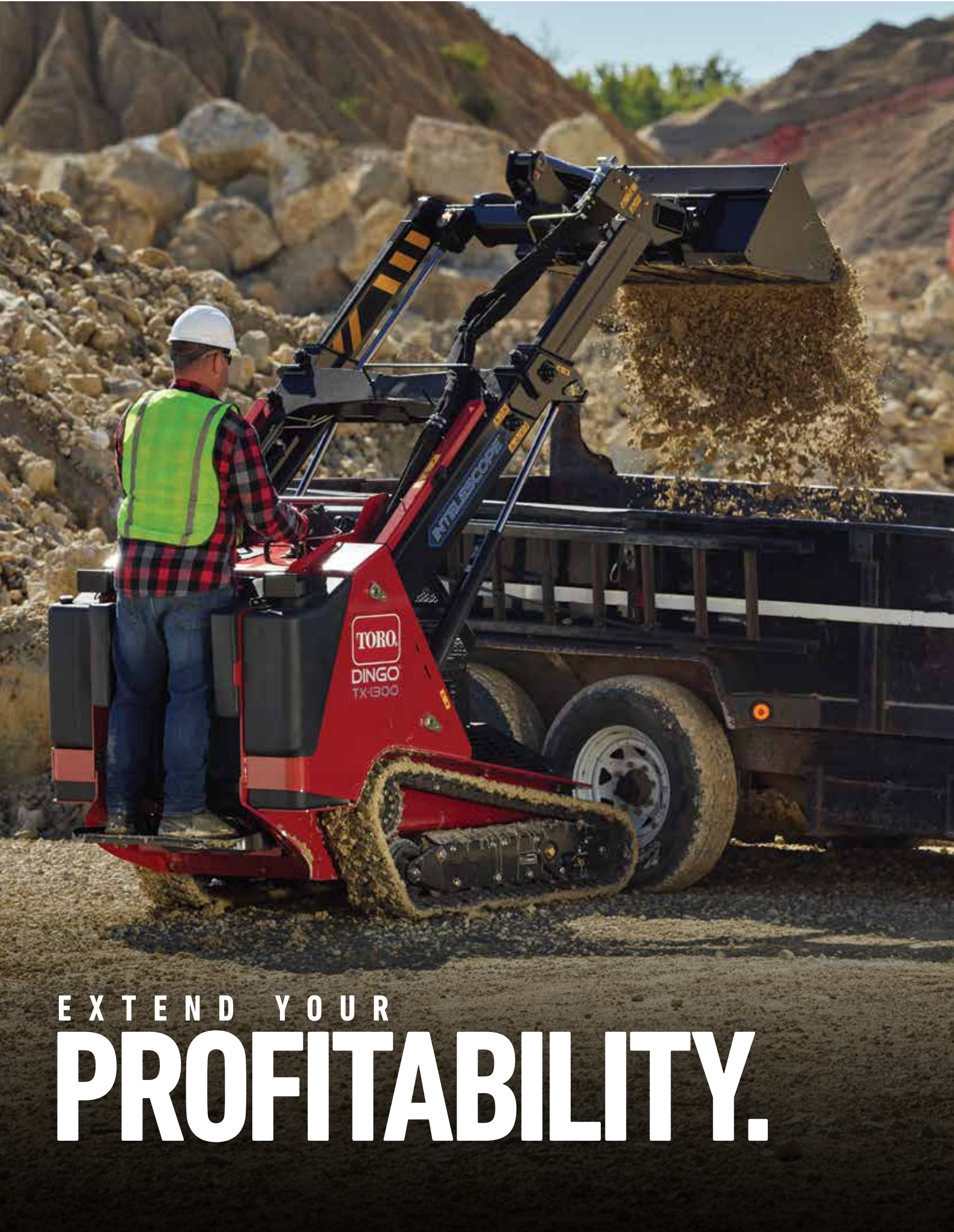
	Electric	Petrol	Diesel	Ride-on	Radial lift
eDingo® 500	X			X	X
Dingo 323		X		X	X
Dingo 320D			X	X	X

TRACKED MODELS

Available in both wide and narrow track



	Petrol	Diesel	Ride-on	Radial lift	Vertical lift	Telescoping
Dingo TX 427	X			X		
Dingo TX 525		X		X		
Dingo TX 700		X	X	X		
Dingo TX 1000		X	X		X	
Dingo TX 1300		X	X			X



EXTEND YOUR
PROFITABILITY.

When you have a lot of material to move, you need the power to do it efficiently. Ideal for landscape, hardscape and tree care jobs, the Toro® Dingo® TX 1300 is the user-friendly workhorse you need to save time. Its combination of power, reach and control puts it in a category of its own, and its jobsite versatility allows you to do more.



TX 1300 CONTROLS

The patented control system is exclusive to Toro and provides intuitive operation that's effortless for the operator, all day long.

1. Grab the traction drive joystick for effortless, single-hand control.
2. Curl, dump or float the bucket while raising or lowering the loader arms with one hand using the joystick.
3. Activate the auxiliary circuit control switch to power the attachments instantly.



Dingo TX 1300
22370

DINGO TX 1300 FEATURES



CAPACITY FOR THE JOB
With a 27 kW (37 hp) Yanmar® Tier V/Stage V-compliant diesel engine and 589 kg (1,300 lb) of rated operating capacity, the Dingo TX 1300 is built to save time. It's also compact enough to manoeuvre in tight spaces where larger equipment can't reach.



EXTRA REACH
The exclusive INTELESCOPE® loader arm with SmartLoad gives 66 cm (26") of additional reach. The telescoped hinge-pin height of 276.9 cm (109") allows loads to be lifted over the sides of skips or trucks to maximise productivity.



FAST CHANGE-OUTS
Compatibility with dozens of Toro attachments provides jobsite versatility. Plus, the pressure-relieving quick-coupler connection system makes connecting and disconnecting attachments a breeze.



CONTROL AND ACCESSIBILITY
The hydraulics and loader arm functions are integrated into one thumb-operated controller for easier, more comfortable operation. The stand-on platform design allows for increased mobility and visibility around the machine.



THE COMPACT UTILITY LOADER, NEXT LEVEL.

Toro has taken innovation to the next level.

The Dingo® TX 1000 Turbo upgraded 18,2 kW (24.7 HP) Yanmar® engine delivers a formidable boost in torque, to tackle heavy loads effortlessly. From landscaping to construction, this compact utility loader adapts to diverse tasks, making it the ultimate multi-tool for professionals.



Dingo TX 1000 Turbo
Narrow Track
22587



Dingo TX 1000 Turbo
Wide Track
22588



TX 1000 TURBO CONTROLS

The patented control system is exclusive to Toro and provides intuitive operation that's effortless for the operator, all day long.

1. Grab the traction drive joystick for effortless, single-hand control.
2. Curl, dump or float the bucket while raising or lowering the loader arms with one hand using the joystick.
3. Activate the auxiliary circuit control on joystick lever to power the attachments instantly.
4. Auxiliary switch for High or Low Hydraulic flow.

DINGO TX 1000 TURBO FEATURES



VERTICAL LIFT LOADER ARMS

Vertical lift arms with 81" (206 cm) hinge pin height allows attachments to easily clear the side of 30-yard dumpsters or one-ton trucks.



ENGINE

Powered by a 24.7 HP turbo Yanmar diesel engine to deliver a consistent and reliable user experience.



SMART POWER®

Smart Power allows the machine to run more efficient by automatically adjusting traction speed to maximize engine, auxiliary, and traction torque.



EASY OPERATION

The auxiliary foot pedal maintains hydraulic flow to the attachment, freeing the operator's hands to focus on ground speed and attachment positioning.



THE NO-NONSENSE
WORKHORSE.

The Toro® Dingo® TX 700 packs a powerful punch in a compact package, making it perfect for projects with limited space. Its all-in-one design, combined with a wide range of compatible attachments, makes it extremely versatile on the job. Moreover, it includes all the familiar features and comforts that you would expect from a Toro Dingo.



Dingo TX 700
Narrow Track
22352



TX 700 CONTROLS

The patented control system is exclusive to Toro and provides intuitive operation that's effortless for the operator, all day long.

1. Grab the traction drive joystick for effortless, single-hand control.
2. Curl, dump or float the bucket while raising or lowering the loader arms with one hand using the joystick.
3. Activate the auxiliary circuit control lever to power the attachments instantly.



Dingo TX 700
Wide Track
22351

DINGO TX 700 FEATURES



SMALLER FOOTPRINT

Packs 346 kg (764 lb) of rated operating capacity in a smaller footprint, making it ideal for projects where homeowners and contractors need to reach tight areas or work in confined spaces.



EASY OPERATION

Featuring patented traction controls and a dedicated stand-on platform, the Dingo TX 700 is easy to use and offers increased comfort and visibility to the operator.



GENTLE ON TURF

The TX 700 offers versatile track options – a Camso® narrow track for enhanced grip or a wide track version that is gentle on the turf. Choose your preferred version based on your terrain and application needs.



JOB VERSATILITY

Compatible with dozens of attachments, including multiple types of buckets, adjustable forks, a grapple, leveller, utility blade and more, the Dingo TX 700 can be used for a wide range of jobs.



RUGGED AND
DEPENDABLE.

The original tracked compact utility loaders, Toro® Dingo® TX 427 and 525 models deliver durability and reliability that both pros and DIY devotees can trust, combined with powerful performance and incredible versatility. For operators who are frequently switching tasks or moving things out of the way, these walk-behind models provide greater productivity due to the ability to walk up to the machine and go. In addition, with walk-behind Dingos, operators don't feel the bumps when going over rough terrain.



EXCLUSIVE TX CONTROLS

Three simple controls let operators get to work fast:

- 1.** Curl, dump or float the bucket while raising or lowering the loader arms with one hand using the joystick.
- 2.** Grab the one-handed traction drive from any angle for effortless control.
- 3.** Activate the auxiliary circuit control lever to power the attachments instantly.



Dingo TX 427
Wide Track
22322



Dingo TX 525
Narrow Track
22323

DINGO TX 427 & TX 525 FEATURES



LOW-IMPACT FOOTPRINT

Long-lasting, aramid-reinforced tracks disperse weight evenly for a light footprint on turf, while delivering better traction in sandy or wet ground conditions.



HIGH-PERFORMANCE HYDRAULICS

The four-pump hydraulic system directs power right where you need it. Operate the loader, bucket, traction and auxiliary drives at the same time for increased operator efficiency.



DIESEL AND PETROL ENGINES

Choose a petrol model for easy maintenance and cold-weather starting. Or choose diesel for better performance in high altitudes and warmer climates, along with more horsepower for attachments.



WALK BEHIND OPERATION

These dedicated walk-behind models allow operators to be separate from the machine for ease of use and increased productivity.



INDOOR SMART,
OUTDOOR TOUGH.

The eDingo 500 is an ideal choice for indoor construction and demolition, thanks to its electric HyperCell Power System® that emits zero engine exhaust emissions. Its slim design allows easy manoeuvrability through doorways and fits in most elevators. The eDingo is also compatible with popular attachments, showcasing the versatility that Toro® Dingos are known for. With Toro's patented controls, operation is intuitive and effortless, and it runs efficiently for a full workday on a single charge, ensuring reliable performance.



eDingo 500
22219

eDINGO 500 FEATURES



THE REACH YOU NEED
 Industry-leading 206 cm (81") hinge pin height while maintaining 233 kg (515 lb) rated operating capacity.



NARROW FOOTPRINT
 The next generation eDingo has a brand-new frame with a narrow 76.2 cm (30") width footprint to easily fit through a 91 cm (3 ft) door.



RELIABLE PERFORMANCE
 The eDingo incorporates the HyperCell Power System® with over 13.57 kWh for up to 8 hours of continuous run-time*. *Run-time may vary based upon conditions and attachment being used.

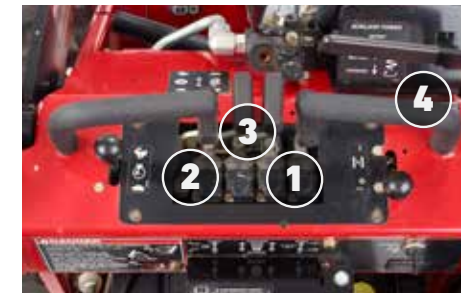


PATENTED CONTROLS
 With Toro's patented one-handed traction controls, operating the eDingo is easy and user-friendly, providing smooth and precise movements regardless of skill level.



GO WHERE YOU NEED
TO WORK.

Access confined spaces you never thought possible with a wheeled Toro® Dingo® compact utility loader. These models offer zero-turn capability, along with a shorter length that's easy to load on a trailer. You also get reliable hydraulic power to use a wide range of attachments. If you do a lot of tasks in tight spaces or on hard surfaces, these are the models for you.



DINGO CONTROLS

Responsive controls make the wheeled Dingo highly manoeuvrable:

1. Curl or dump the attachment while raising or lowering the loader arms.
2. Raise and lower loader arms.
3. Traction drive control.
4. Activate the auxiliary circuit control lever to power the attachments instantly.



Dingo 320-D
22337CP



Dingo 323
22318

DINGO 323 & 320D FEATURES



HIGHLY MANOEUVRABLE
 Short wheelbase design offers excellent manoeuvrability. Get into tight spaces where only hand labour could go before.



TWO TRANSPORT SPEEDS
 Low speed sends more hydraulic power to the attachment and high speed sends more power to the wheels. The low speed option also helps new operators shorten their learning curve.



IMPROVED VISIBILITY
 The integrated ride-on operator platform allows improved visibility of the working area and attachments.



4-PAW® INDEPENDENT FOUR-WHEEL DRIVE
 Four independent wheel motors deliver hydraulic flow and pressure to all four wheels for improved traction and mobility. Fewer moving parts also mean less maintenance.

Toro Dingo attachments are specifically designed to work with Toro Dingo Compact Utility Loaders, ensuring peak performance and delivering the best results. Over 35 attachments are designed to be easy to operate and provide clear sight lines, allowing operators to work efficiently and accurately.



DINGO PRODUCTIVITY-BOOSTING ATTACHMENTS

TRENCHING, PLOUGHING AND BORING



BORE DRIVE HEAD 22420

Easily bore under driveways and pavements to simplify irrigation and cable installations. Working depth: 48.2 cm (19"). Bits and reamers up to 11.4 cm (4.5") in diameter available.



VIBRATORY PLOUGH 22911

Reduce time spent on irrigation or cable installations. The vibratory plough optimises pipe-pulling performance while minimising turf damage. Extremely tight turning radius allows for precise manoeuvring in confined spaces. A chuted blade for wires is also available.



HIGH-SPEED TRENCHER HEAD 22474

Ideal for fast, efficient trenching in most soil conditions. Great for cable and drainpipe installation, tree planting, irrigation installations and more. Choose from 60.9, 91.4, 121.9 cm* (24", 36" and 48") booms.

*Longer, optional spoils auger recommended for 121.9 cm (48") boom.



HIGH-TORQUE TRENCHER HEAD 22473

Guarantees performance in difficult soil conditions. Choose from 60.9, 91.4, 121.9 cm* (24", 36" and 48") booms.

*Optional spoils auger recommended for 121.9 cm (48") boom.



TRENCH FILLER 22472

Fill trenches in a single pass. Two sets of opposing augers direct spoils from the sides of the trench back into the hole. Standard float mechanism allows for up to 12.7 cm (5") of ground-following flotation. Skids evenly disperse weight and slide easily over turf, minimising damage.

Auger diameter: 35.5 cm (14")

ATTACHMENTS



ROD AND REAMER KIT SPECIFICATIONS | 22421

Standard equipment	Boring bit: 1 3/4" Reamer: 2 1/2" Repair kit: 1 3/16" Uncoupling tool: 1 3/16" Swivel shank: 1 3/16" 4 drill rods: 5' length x 7/8" diameter
Weight	26 kg (57 lb)
Optional equipment	2" Reamer 2 7/8" Reamer 3 1/4" Reamer 3 1/2" Reamer 4 1/2" Reamer

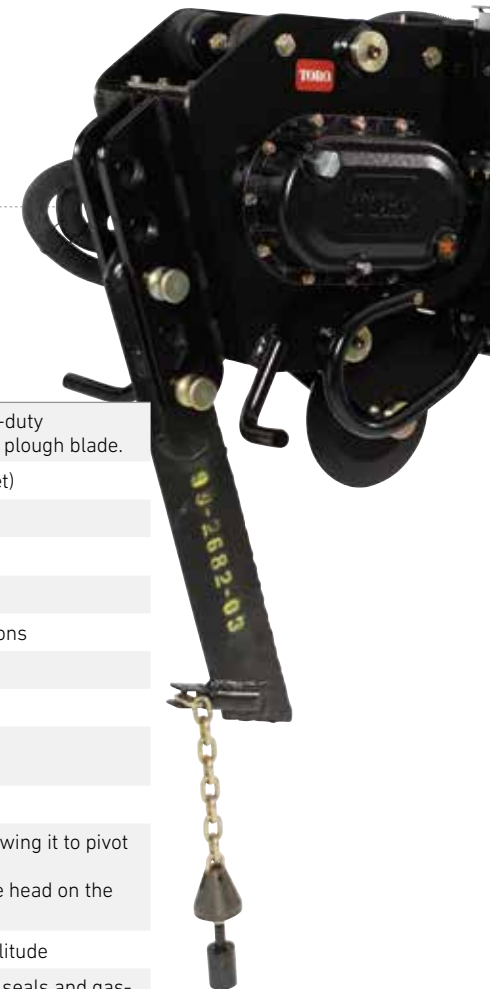
Bore drive head
22420

Rod and reamer kit
22421

Vibratory Plough
22911

VIBRATORY PLOUGH SPECIFICATIONS | 22911

Plough depths	Adjustable from 15.2–30.5 cm (6–12") with standard blade or optional heavy-duty 30.5 cm (12") plough blade. Adjustable from 30.5–45.7 cm (12–18") with 45.7 cm (18") plough blade.
Pipe size	Up to 3.8 cm (1.5") diameter flexible polyethylene (with the standard bullet)
Plough cycle	1,390 vpm at 32.2 lpm
Swing angle	+/- 30°
Minimum turning radius	182.8 cm (72")
Plough speed	26.8 m/min (0 - 88 ft/min) Plough speed varies widely with ground conditions
Width	71.6 cm (28.2")
Length	86.3 cm (34")
Height	68.5 cm (27") without blade 102.1 cm (40.2") with blade
Weight	207.2 kg (457 lb)
Mounting frame	Fabricated, welded steel frame houses a vertical pivot that holds the shaker head, allowing it to pivot while following the traction unit. Compression springs on either side of the head centre the head on the machine.
Isolators	4 x 7.9 cm (3.12") diameter rubber isolators control the plough vibration amplitude
Bearings	Four pressed-in spherical roller bearings hold the shafts. The bearings are isolated by seals and gaskets and are lubricated by an oil bath. The bearings press into a 8.5 cm (3.35") bore and fit over a 4.3 cm (1.7") diameter shaft.
Gear cover	A machined, cast aluminium cover, with a nitrile rubber-coated steel gasket creates a sealed enclosed space for an oil bath to lubricate the gears and bearings.
Blades and pullers	0.63 x 30.4 cm (1/4" x 12") standard blade; 0.9 x 45.7 cm (3/8" x 18") plough blade 1.2 x 45.7 cm (1/2" x 18") standard blade; 30.4 cm (12") chuted blade Optional spool carrier for laying cable with chuted blade



TRENCHER HEAD SPECIFICATIONS | 22473 AND 22474

	HIGH-SPEED TRENCHER HEAD 22474	HIGH-TORQUE TRENCHER HEAD 22473
Overall width	88.9 cm (35")	
Auger diameter	31.7 cm (12.5")	
Overall height	60.9 cm (24")	
Weight	176.9 kg (390 lb) with boom and chain	
Torque	599 N-m @ 207 bar (442 ft-lb @ 3,000 psi)	915 N-m @ 207 bar (675 ft-lb @ 3,000 psi)
Auger speed	243 rpm @ 54.1 lpm	120 rpm @ 41.6 lpm



High-speed trencher head
22474

TRENCH FILLER SPECIFICATIONS | 22472

Overall width	157 cm (62")
Working width	122 cm (48")
Overall length	79 cm (31")
Overall height	56 cm (22")
Weight	186 kg (410 lb)
Float distance	12.7 cm (5")
Auger diameter	35.6 cm (14")



Trench filler
22472

BOOMS AND CHAINS |

Model #	Description
22464	Trencher crumber
22477	Trencher crumber
22480	60.9 x 10.1 cm (24" x 4") Soil chain
22481	60.9 x 10.1 cm (24" x 4") Combo chain
22482	60.9 x 10.1 cm (24" x 4") Rock chain
22483	60.9 x 15.2 cm (24" x 6") Soil chain
22484	60.9 x 15.2 cm (24" x 6") Combo chain
22485	60.9 x 15.2 cm (24" x 6") Rock chain
22486	91.4 x 10.1 cm (36" x 4") Soil chain
22487	91.4 x 10.1 cm (36" x 4") Combo chain
22488	91.4 x 10.1 cm (36" x 4") Rock chain
22489	91.4 x 15.2 cm (36" x 6") Rock chain
22490	91.4 x 15.2 cm (36" x 6") Soil chain
22491	91.4 x 15.2 cm (36" x 6") Combo chain
22492	121.9 x 10.1 cm (48" x 4") Soil chain
22493	121.9 x 10.1 cm (48" x 4") Combo chain (4-Pitch)
22494	121.9 x 15.2 cm (48" x 6") Soil chain
22495	121.9 x 15.2 cm (48" x 6") Combo chain
22975	60.9 cm (24") Boom
22976	91.4 cm (36") Boom
22977	121.9 cm (48") Boom



AUGERS AND TREE CARE



HIGH-TORQUE AUGER POWER HEAD 22805

Designed specifically to power up to 76.2 cm (30") diameter augers in the toughest soil conditions. Auger bits from 15.2 x 76.2 cm (6" to 30").



UNIVERSAL SWIVEL AUGER POWER HEAD 22806

Swivels in all directions to ensure plumb holes on uneven terrain up to 45.7 cm (18"). Perfect for installing fences.



STUMP GRINDER 22429

With its rugged design and incredible hydraulic power, the Toro® stump grinder makes powder of the toughest stumps. Grinds down as far as 41.9 cm (16.5") below grade. Grinds up to 91.4 cm (36") above grade.



REINFORCED ADJUSTABLE FORKS 22586

Manually adjust forks with ease to desired width. Carry fence posts, rocks, pallets, plants, fertiliser, irrigation supplies and more. Forks constructed of high-strength steel. Lift capacity up to 272.1 kg* (600 lb)

*Dependent on Dingo model used



GRAPPLE RAKE 22577

Grab, drag, lift and place materials with ease. The grapple has two heavy-duty cylinders capable of producing 1,361.7 kg* (3,000 lb) of clamping force at the tine tips, ensuring that you can grab hold and not let go. Compact width of 87.6 cm (34.5") guarantees access to tight areas.

*Dependent on Dingo model used



HYDRAULIC TREE FORKS 22438

Plant trees and large shrubs quickly and effortlessly, plus move a variety of other materials around. Consists of two forks with a hydraulic cylinder to pivot one of the forks, creating a clamping action for picking up and moving objects. Angle design allows for gentle handling. Opening at tip: 63.5 cm (25")

ATTACHMENTS

AUGER POWER HEAD SPECIFICATIONS | 22805 AND 22806

	HIGH TORQUE 22805	UNIVERSAL SWIVEL 22806
Standard equipment	6.5 cm (2 ⁵ / ₁₆ ") round output shaft for mounting auger bits Dingo quick-attach mounting plate	
Mounting frame	Fabricated, welded steel frame with two 1.9 cm (0.75") thick pivot ears and a 0.6 cm (0.25") thick gusset	
Planetary mount	Ductile iron, cast planetary mount with clevis-style pivots	
Pivot pins	Hardened, greaseable, 1" (2.5 cm) diameter flag pins held in place	
Motor type	LSHT Geroler motor	
Motor displacement	187 cubic cm/rev (11.9 cubic inches)	130 cubic cm/rev (8.0 cubic inches)
Motor rated pressure	207 bar (3,000 psi) continuous	
Motor flow range	0-76 lpm	
Motor mounting type	4-bolt Magneto mounting	
Motor shaft type	3.1 cm (1.25") 14-tooth splined shaft	
Motor ports	7/8-14 (-10) SAE ORB ports	
Gear drive type	Model 6 shaft output planetary gear drive	
Gear drive reduction	3.75:1	
Gear drive input mounting type	4-bolt Magneto mounting	
Gear drive input shaft type	3.1 cm (1.25") 14-tooth splined shaft	
Gear drive planetary mounting	Nine 1.5 cm (0.6") diameter holes	
Gear drive output shaft	6.5 cm (2 ⁵ / ₁₆ ") diameter output shaft	
Hoses	Two (-8) high-pressure hoses protected by a convoluted tubing cover	
Quick couplers	Male and female quick-flush face couplers	
Dimensions (LxWxH)	60.9 cm x 41.91 cm x 55.8 cm (24" x 16.5" x 22")	49.0 cm x 60.9 cm x 55.8 cm (19.3" x 24" x 22")
Weight	97.5 kg (215 lb)	110.2 kg (243 lb)
Bit speed	54 rpm @ 11 gpm (42 lpm), 95% hyd. eff.	80 rpm @ 11 gpm (42 lpm), 95% hyd. eff.
Torque	2,053 N·m (1,514 ft·lb) @ 207 bar (3,000 psi) @ 42 lpm	1,437 N·m (1,060 ft·lb) @ 207 bar (3,000 psi) @ 42 lpm



AUGER BITS AND EXTENSIONS |

Model #	Attachment Description
22820	15.2 cm (6") full flight auger bit
22821	22.8 cm (9") full flight auger bit
22822	30.4 cm (12") full flight auger bit
22823	38.1 cm (15") full flight auger bit
22814	45.7 cm (18") auger bit
22815	60.9 cm (24") auger bit
22816	76.2 cm (30") auger bit
22818	30.4 cm (12") auger extension
22819	60.9 cm (24") auger extension



STUMP GRINDER SPECIFICATIONS | 22429

Number of teeth	12 carbide tipped
Wheel diameter (with teeth)	124 cm (49")
Height	41 cm (16.0")
Weight	77 kg (170 lb)
Wheel speed	2,000 rpm
Platform	Fabricated welded frame consisting of 1.3 cm (0.50") x 5 cm (2") steel bars with 1.6 cm (0.63") diameter cross bars. Welded to the mounting frame.

Stump grinder
22429

HYDRAULIC TREE FORKS SPECIFICATIONS | 22438

Width	62.2 cm (24.5")
Length	114.3 cm (45")
Height	31.8 cm (12.5")
Weight	76.7 kg (169 lb)
Maximum lift height	116.8 cm (46")
Lift capacity	152 kg (335 lb) with 91 kg (200 lb) operator
Cylinder force	4,275.5 kg (9,425 lb) @ 207 bar (3,000 psi)
Fork length	109.2 cm (43")
Fork section	7.6 cm (3") x 7.6 cm (3") x 6 mm (0.25") thick
Right fork	Stationary
Left fork	Pivots 47° plus/minus 1°; opens 76.2 cm (30") wide
Fork reach (max)	116.8 cm (46")



Hydraulic tree forks
22438



Grapple rake
22577

GRAPPLE RAKE SPECIFICATIONS | 22521

Overall width	86 cm (34.5")
Depth*	46 cm (18")
Overall height	74.9 cm (29.5")
Grapple opening	85.1 cm (33.5")
Weight	120 kg (265 lb)

*When top grapple is fully closed



Grapple rake
22577

EARTHMOVING AND DIGGING



LEVELLER 23165

Grade, finish and spread topsoil and other landscape materials. Backfill trenches, break up turf and carry jobsite materials such as plants, fertiliser, irrigation supplies and more.



SOIL CULTIVATOR 23102

Bury rocks, soil clods, debris and grass. Prepare seed bed in one pass, tilling soil up to 13.9 cm (5.5") deep. Adjustable grading bar and comb teeth leave a perfect germination environment for fresh seed or sod.



TILLER 22445

Hardened steel tines withstand any soil condition, including clay or hardpan. Till up to 15.2 cm (6") deep and 101.6 cm (40") wide in one pass. Reversible tine direction frees jams quickly.



POWER BOX RAKE 22426

Perfect tool for seed or sod bed preparation. Carbide-teeth rotary drum pulverises rough soil, cuts high spots and fills low spots in one pass while removing rocks and debris. Manually adjustable yoke allows 20° offset.



BACKHOE WITH 30.5 cm (12") BUCKET 23106

Powerful and versatile. Dig foundations, plant trees, trench and much more. Folds to 118.1 cm (46.5") wide for access to tight spaces and ease of transport.



UTILITY BLADE 22414

Great for filling trenches, pushing snow, grading topsoil and shaping berms and mounds. Compact size makes it easy to manoeuvre in confined areas. Hydraulic blade rotates from top to bottom to maximise performance and increase blade life.

LEVELLER SPECIFICATIONS | 23165

Length	91.4 cm (36")
Width	124.4 cm (49")
Height	40.6 cm (16")
Weight	77.1 kg (170 lb)
Platform	Fabricated welded frame consisting of 1.2 cm (0.50") x 5.0 cm (2") steel bars with 1.6 cm (0.63") diameter cross bars. Welded to the mounting frame.

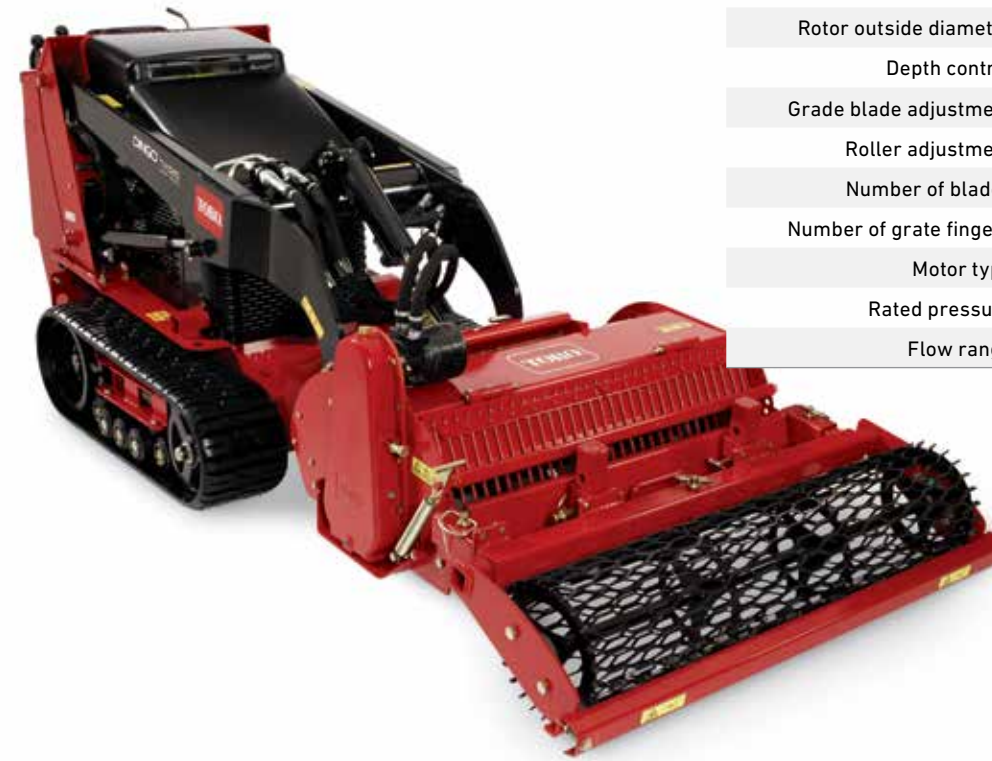


Leveller
23165

ATTACHMENTS

SOIL CULTIVATOR SPECIFICATIONS | 23102

Overall width	129.5 cm (51")
Working width	91.4 cm (36")
Overall length	129.5 cm (51")
Overall height	53.3 cm (21")
Working depth	13.9 cm (5.5")
Weight	195 kg (430 lb)
Rotor outside diameter	40 cm (15.75")
Depth control	Mechanical adjustment
Grade blade adjustment	Screw jack system
Roller adjustment	Mechanical adjustment
Number of blades	20 V-shaped non-panning blades
Number of grate fingers	31 screening rods
Motor type	Powerful LSHT motor
Rated pressure	207 bar (3,000 psi)
Flow range	75.7 lpm



Soil cultivator
23102

TILLER SPECIFICATIONS | 22445

Overall width	101.6 cm (40")
Working width	101.6 cm (40")
Overall length	50.8 cm (20")
Overall height	66.0 cm (26")
Working depth	0–15.2 cm (0–6")
Weight	164.6 kg (363 lb)
Tine diameter	122.6 cm (48.3")
No. of tines	36
Tine speed	175 rpm @ 32.3 lpm

BUCKET OPTIONS |

22340	Dingo TX 1000 standard bucket
22342	Dingo TX 1000 high volume bucket
22345	Dingo TX 1300 standard bucket
22346	Dingo TX 1300 low profile bucket
22409	Standard bucket
22410	Light materials bucket
22478	4-in-1 bucket
22520	Narrow bucket
22522	Standard bucket with spacer
22590	Grapple bucket



Tiller
22445

POWER BOX RAKE SPECIFICATIONS | 22426

Overall width	170.1 cm (67")
Working width	121.9 cm (48")
Overall length	66.0 cm (26")
Overall height	101.6 cm (40")
Weight	231.3 kg (510 lb)
Roller angle	0-20°



Power box rake
22426



BACKHOE WITH 30.5 CM (12") BUCKET SPECIFICATIONS | 23106

Stabiliser type	Hydraulic, fold-down
Stabiliser width	198.1 cm (78")
Transport width	118.1 cm (46.5")
Length	104.1 cm (41")
Height	Transport: 180 cm (71")
Weight	382.3 kg (843 lb)
Maximum digging depth	208.2 cm (82")
Swing arc	180°
Bucket rotation	180°

*Fit-up kits required to hook up backhoe to Dingo base unit.



Backhoe with
30.4 cm (12") bucket
23106

UTILITY BLADE SPECIFICATIONS | 22414

Frame	Thick, welded frame assembly
Blade	7-gauge, welded blade assembly with two 0.6 cm (0.25") thick edges
Grading width	121.9 cm (48")
Length	64.1 cm (25.25")
Height	52.7 cm (20.75")
Weight	63.5 kg (140 lb)



Utility blade
22414



CEMENT BOWL
22442

Mix, haul and pour up to 90.7 kg (200 lb) of dry cement. Flighting mixes and holds cement in bowl during mixing. The same auger design permits cement to be poured into fence post holes with the posts in place. Auger power head required (sold separately).



REINFORCED ADJUSTABLE FORKS
22586

Easily adjust forks manually to desired width. Carry fence posts, rocks, pallets, plants, fertiliser, irrigation supplies and more. Forks constructed of high-strength steel.



HYDRAULIC BREAKER
23136

The perfect tool for precision demolition. Combined with the compact size and ease of use of the Dingo, the breaker simplifies the difficult job of breaking concrete, asphalt, rock or brick during renovation jobs. Powerful performance delivers 339 N-m (250 ft-lb) of force and up to 1,150 bpm.

MULTI-PURPOSE TOOL
22672

Tow, dig and break up soil with the 2-in-1: ripper and towbar.



Multi-purpose tool
w/ hitch
22672

CEMENT BOWL SPECIFICATIONS | 22442

Construction	Fabricated, welded steel barrel with 14-gauge walls, 10-gauge supports and a cast 6.5 cm (2 5/8") diameter receiver tube
Required equipment	High torque auger power head (22805) or Universal swivel auger power head (22806)
Length	46.3 cm (18.25")
Diameter	63.8 cm (25.15")
Weight	34.0 kg (75 lb)
Maximum dry concrete load	90.7 kg (200 lb)



Cement bowl
22442

REINFORCED ADJUSTABLE FORKS SPECIFICATIONS | 22586

Width	91.4 cm (36")
Length	121.9 cm (48")
Height	101.6 cm (30")
Weight	110.6 kg (244 lb)
Lift capacity	99.7 kg (220 lb) - excluding TX 1000 and TX 1300 TX 1000: 272.1 kg (600 lb) TX 1300 (retracted): 408.2 kg (900 lb) TX 1300 (extended): 226.7 kg (500 lb)



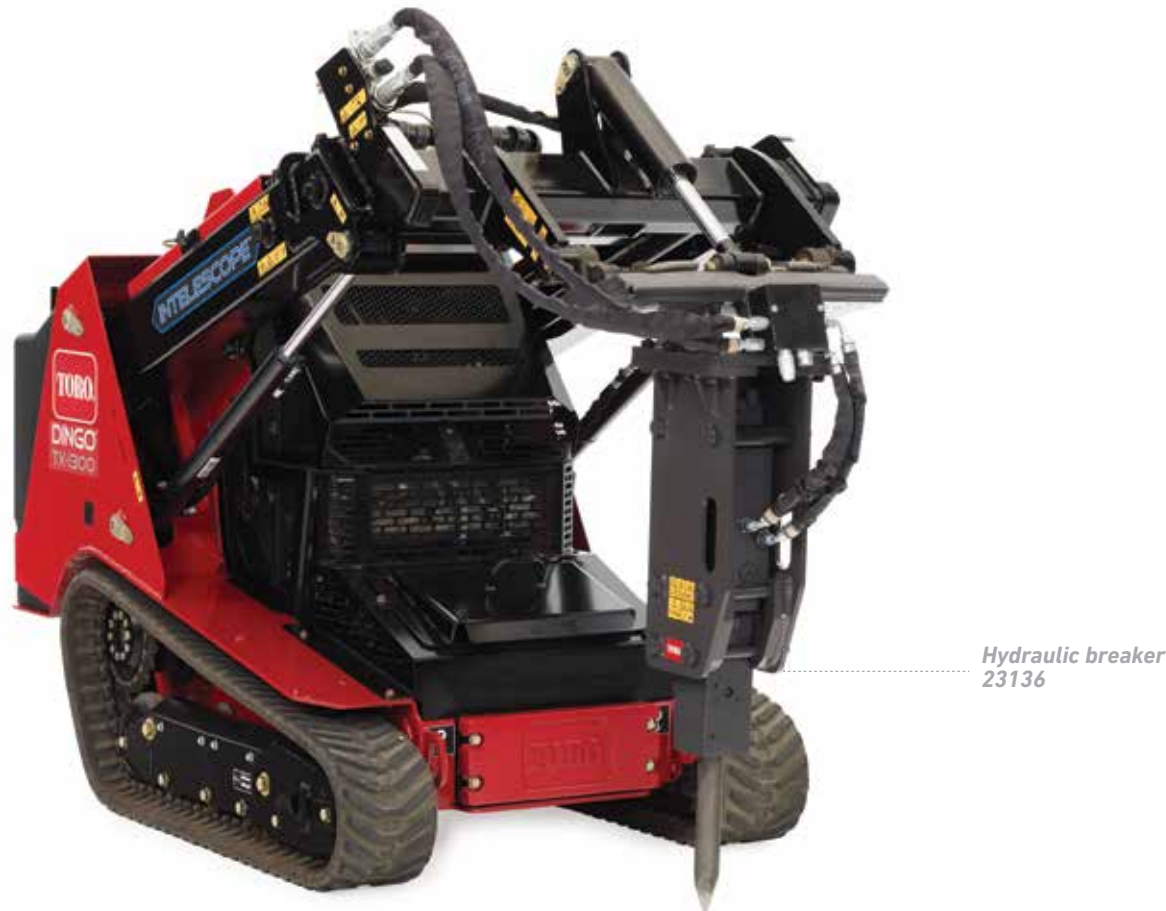
Reinforced
adjustable forks
22341



MULTI-PURPOSE TOOL SPECIFICATIONS | 22672

Frame	Fabricated frame assembly consisting of 7-gauge steel bar welded to the Dingo quick-attach mounting plate. The frame has holes that accept 1.2 cm (0.50") clevis pins to hold tools in place	
Ripper tines	Three fabricated 1.6 cm (0.63") thick steel ripper tines with cast ADI spear points connected by spring pins to the tips	
Tow bar	Fabricated welded 1.6 cm (0.63") thick steel tongue, designed to accept a ball with 1" (2.5 cm) diameter threads. Ball not included	
Width	60.9 cm (24")	
Length	10.1 cm (4")	
Height	25.4 cm (10")	
Weight	18.1 kg (40 lb)	
Recommended equipment	Counterweight when tow bar is used	

Multi-purpose tool 22672



Hydraulic breaker 23136

HYDRAULIC BREAKER SPECIFICATIONS | 23136

Required equipment	A crossover relief valve must first be installed on wheeled Dingo models. Installation instructions are included in the kit (99-4360).	
Width	62.9 cm (24.8")	
Length	130.0 cm (51.2")	
Height	33.0 cm (13")	
Weight	176.4 kg (389 lb)	
Bit working length	28.9 cm (11.4")	
Bit diameter	2" (5.0 cm)	
Impact energy class	339 N-m (250 ft-lb)	
Blows per minute	600-1,150	
Flow range	20-35 lpm	
Optional equipment	Line cut chisel (106-7667) Asphalt chisel (106-7684) Tamp bit (106-7685) Helmet w/face shield (100-4143)	

DEMOLITION AND CONSTRUCTION



GRAPPLE BUCKET 22590

Designed for contractors looking for a bucket to grab, drag, lift and remove materials on residential, commercial and demolition sites.

GRAPPLE BUCKET SPECIFICATIONS | 22590

Height	53.5 cm (21.1")
Length	78.2 cm (30.8")
Width	85.0 cm (33.5")
Weight	114.7 kg (253 lb)



4-IN-1 BUCKET 22478

Works as a standard bucket with the jaws completely closed, or a blade or leveller with the jaws completely open. The side jaws can also be used as a grapple to pick up material by closing them over objects or materials to be transported.

4-IN-1 BUCKET SPECIFICATIONS | 22478

Capacityw	0.08 m ³ (2.7 ft ³) – SAE Struck; 0.09 m ³ (3.3 ft ³) – Heaped
Height	55.8 cm (22")
Length	68.5 cm (27")
Width	124.4 cm (49")
Weight	132.4 kg (292 lb)



FLOOR SCRAPER 22670

Displace vinyl, quarry and ceramic tile, carpet squares, paint, glue, asphalt and more. Floating blade holder keeps blades level on uneven ground. Rotating blade holder reduces need to sharpen blade. Three-position arrangement allows user to remove material closer to a wall. Four suitcase weights increase productivity.

FLOOR SCRAPER SPECIFICATIONS | 22670

Required equipment	A crossover relief valve must first be installed on wheeled Dingo models. Installation instructions are included in the kit (99-4360).
Height*	40.6 cm (16")
Length*	78.7 cm (31")
Width*	86.3 cm (34")
Weight**	254.0 kg (560 lb)

*With blade holder
**Including four weights

SNOW REMOVAL



DINGO TX 1000 TURBO SNOW CANOPY 22584

Shields the operator from wind, rain and snow so they can comfortably focus on the task at hand.

SNOW CANOPY SPECIFICATIONS | 22584

Height	229 cm (90")
Width	99 cm (39")
Weight	15.4 kg (34 lb)



DINGO TX 1000 TURBO SNOW THROWER 22585

Two-stage design delivers heavy-duty performance in wet snow conditions. Electrical chute articulation can be adjusted from the operator position, no hand-cranking required.

SNOW THROWER SPECIFICATIONS | 22585

Standard equipment	Quick couplers, mounting plate
Height	137 cm (54")
Length	94 cm (37")
Width	123 cm (48.5")
Weight	276.2 kg (609 lb)



BOSS® DINGO SNOW BLADE STB13567B (1.5 m (5') Snow blade) STB13759B (1.2 m (4') Snow blade)

Features polyethylene blade with a reversible plate, steel cutting edge. Hydraulic angle allows 30° rotation in both directions, no manual adjustments required. Full blade trip design helps to prevent plough or vehicle damage when striking obstacles. *Requires MSC23000 BOSS Dingo snow blade attachment plate.*

BOSS® DINGO SNOW BLADE SPECIFICATIONS

	1.5 m (5') SNOW BLADE STB13567B	1.2 m (4') SNOW BLADE STB13759B
Height	55.8 cm (22")	55.8 cm (22")
Width	132.0 cm (52") at 30° angle	104.1 cm (41") at 30° angle
Weight	86.1 kg (190 lb)	77.1 kg (170 lb)

BOSS ACCESSORIES |

Model #	Accessory description
MSC04587B	BOSS snow deflector kit
MSC13040	BOSS plough shoe kit
MSC13850B	BOSS 15.2 cm (6") blade extension
MSC13870B	BOSS wing extension kit
MSC23000	BOSS Dingo snow blade attachment plate (male Q-tach plate)
STB13801	BOSS 1.5 m (5') urethane edge
STB13802	BOSS 1.2 m (4') urethane edge

eDINGO® 500



76 CM (30") ADJUSTABLE FORKS
23175

The Toro Dingo 76 cm (30") adjustable forks greatly increase the productivity and performance of your Dingo system. Similar to our standard adjustable forks, the 76 cm (30") version is specifically designed for the eDingo 500 and allows movement through tight places, especially while performing indoor construction and demolition. This versatile attachment can be used for a variety of material handling jobs to move debris, pallets, etc. around the job site. It's like having a roving workstation to transport heavy materials around the job site without fatigue. For use on all Dingo models, except Dingo TXL 2000.



76 CM (30") FLOOR SCRAPER
22673

The Toro eDingo floor scraper has an all-steel construction that makes flooring removal simple. It displaces vinyl, quarry and ceramic tile, as well as carpet squares, paint, glue and more.



OUTDOOR TYRES
161-1050 (SOLD INDIVIDUALLY)

Black rubber non-pneumatic 18 x 7 tyres offer a wider tyre option for the eDingo 500. The eDingo width increases to 86 cm



76 CM (30") GRAPPLE BUCKET
23176

Designed for contractors looking for a bucket to grab, drag, lift and remove materials on residential, commercial and demolition sites. Designed to be used on the Dingo 323, 320-D, eDingo, TX 427, TX 525, TX700 and TX 1000



76 CM (30") STANDARD BUCKET
23174

Use this standard bucket for moving rock, dirt, sand or other materials off and around the job site. The hardened steel cutting edge offers improved cutting and digging capability for better performance to handle tough digging conditions and affords superior wear. Capacity = 1 m³ (4 ft³)

76 CM (30") FLOOR SCRAPER | 22673

Height	49.3 cm (19.4")
Length	77 cm (30.3")
Weight	238.1 kg (525 lb)
Width	71.1 cm (28")



Floor
scraper
22673



Adjustable
forks
23175

76 CM ADJUSTABLE FORKS | 23175

Construction	Fabricated, welded steel frame
Height	68.76 cm (27.1")
Length	118.1 cm (46.5")
Mounting frame	Dingo® quick-attach mounting plate, fabricated, welded base
Weight (kg)	83 cm (183")
Width (cm)	72.1 cm (28.4")



Grapple
bucket
23176

76 CM (30") GRAPPLE BUCKET | 23176

Height	21.6" (54.9 cm)
Length	31.1" (79 cm)
Mounting frame	Dingo® quick-attach mounting plate, fabricated, welded base
Quick couplers	Dripless, flush face quick couplers
Weight	108 kg (238 lb)
Width	76.2 cm (30")

76 CM STANDARD BUCKET | 23174

Capacity SAE struck	0.08 m (2.9 ft)
Construction	Fabricated, welded steel frame
Height	38.3 cm (15.1")
Length	67 cm (26.4")
Mounting frame	Dingo® quick-attach mounting plate, fabricated, welded base
Weight	51.3 kg (113.2 lb)
Width	74.6 cm (29.4")



Standard
bucket

ATTACHMENTS



GRAPPLE RAKE
22577

Grab, drag, lift and place materials with ease. The grapple has two heavy-duty cylinders capable of producing 1,360.7 kg* (3,000 lb) of clamping force at the tine tips, ensuring that you can grab hold and not let go. Compact width of 87.6 cm (34.5") guarantees access to tight areas. *Dependent on Dingo model used



HIGH-SPEED TRENCHER HEAD
22474

Ideal for fast, efficient trenching in most soil conditions. Great for cable and drainpipe installation, tree planting, irrigation installations and more. Choose from 60.9, 94.1, 121.9 cm* (24", 36" and 48") booms. *Longer optional spoils auger recommended for 121.9 cm (48") boom.



BUCKETS

Perfect for light-duty grading, levelling and material handling. Buckets vary in capacity from 0.1 m³ (4.3 ft³) to 0.3 m³ (9 ft³) (for lighter materials).



POWER BOX RAKE
22426

Perfect tool for seed or sod bed preparation. Carbide-teeth rotary drum pulverises rough soil, cuts high spots and fills low spots in one pass while removing rocks and debris. Manually adjustable yoke allows 20° offset.



HIGH-TORQUE AUGER POWER HEAD
22805

Designed specifically to power up to 76.2 cm (30") diameter augers in the toughest soil conditions. Auger bits from 15.2 to 76.2 cm (6" to 30").



REINFORCED ADJUSTABLE FORKS
22586

Easily adjust forks manually to desired width. Carry fence posts, rocks, pallets, plants, fertiliser, irrigation supplies and more. Forks constructed of high-strength steel. Lift capacity up to 151.9 kg (335 lb).



Grapple rake
22577



ATTACHMENTS WITH VERSATILITY IN MIND

Model #	Attachment Description	Model #	Attachment Description
22342	Dingo TX 1000 high-volume bucket	22474	High-speed trencher head
22345	Dingo TX 1300 standard bucket	22805	High-torque auger power head
22346	Dingo TX 1300 low profile bucket	22806	Universal swivel auger power head
22420	Bore drive head	22820	15.2 cm (6") full flight auger bit
22421	Rod and reamer kit	22821	22.8 cm (9") full flight auger bit
22672	Multi-purpose tool	22822	30.4 cm (12") full flight auger bit
22426	Power box rake	22823	38.1 cm (15") full flight auger bit
22429	Stump grinder	22814	45.7 cm (18") auger bit
22586	Reinforced adjustable forks	22815	60.9 cm (24") auger bit
22442	Cement bowl	22816	76.2 cm (30") auger bit
22445	Tiller	22818	30.4 cm (12") auger extension
22464	Trencher crumber	22819	60.9 cm (24") auger extension
22472	Trench filler	22577	Grapple rake
22473	High-torque trencher head	22911	Vibratory plough

The attachments shown here are compatible with the Dingo TX 1300, which features Toro's exclusive INTELESCOPE® loader arm design.



R U N S A S L O N G A S
YOUR CREW.

Exceptional run-time and a compact design make it nimble and convenient. Electric power eliminates engine exhaust emissions, and the thick, polyethylene tub handles all types of material. The electric Ultra Buggy is powered by HyperCell®, a battery technology developed by Toro, to match the power of our traditional petrol-powered products and is optimised to deliver up to an exceptional eight hours of continuous run-time, allowing it to run as long as your crew.



Electric Ultra Buggy™
68037



1,134 kg
(2,500 lb)
Carrying Capacity

The machine and its components have been designed and tested to achieve a 1,134 kg (2,500 lb) carrying capacity.

ELECTRIC ULTRA BUGGY FEATURES



POWERED BY HYPERCELL
Toro designed lithium-ion battery system optimised to deliver up to eight hours of continuous run-time.



NARROW WIDTH
The 80 cm (31.5") width of this machine allows easy access through 91 cm (3') doors.



MOUNTED CONTROLS
Mounted directional and dump switches provide the operator with continuous motion on the machine and eliminates the need to fully stop the machine to change direction or dump the load.

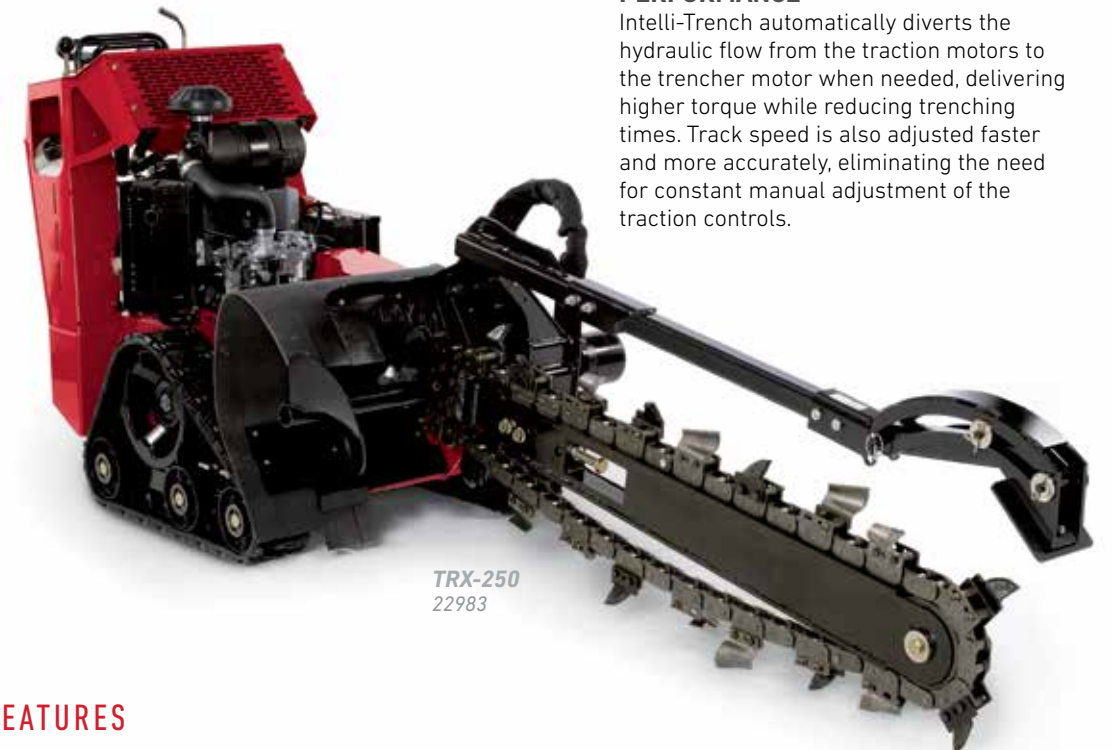


AUTO RETURN DUMP
This feature ensures that the tub automatically returns to the resting position so that the operator can focus on retrieving the next load of concrete.



EFFICIENT AND
POWERFUL.

Toro TRX walk-behind trenchers are now more efficient and powerful than ever. Two models combine the groundbreaking manoeuvrability that the TRX walk-behind trencher is known for, with even better performance and serviceability. Improved hydraulics and streamlined controls make these models easier to operate. Intelli-Trench® technology automatically adjusts the hydraulic flow, putting power where you need it so you can maximise productivity. Plus, with significantly fewer parts, the newer models require less maintenance.



OPTIMISED HYDRAULIC PERFORMANCE
Intelli-Trench automatically diverts the hydraulic flow from the traction motors to the trencher motor when needed, delivering higher torque while reducing trenching times. Track speed is also adjusted faster and more accurately, eliminating the need for constant manual adjustment of the traction controls.

TRX-250 & TRX-300 FEATURES



OUTSTANDING MANOEUVREABILITY
The track drive design provides a low centre of gravity and large footprint, offering stability and increased manoeuvrability while minimising damage to existing turf.



SMOOTH BOOM MOTION
The boom lift and lower function has been enhanced hydraulically, allowing the boom to move up and down smoothly.



EASY-TO-LEARN CONTROLS
The TRX's streamlined controls are easy to learn and operate. The design includes the familiar TRX trencher valve handle and boom lift lever, as well as independent traction control for the left track and the right track.



SIMPLIFIED SERVICE
The TRX design has significantly fewer parts than previous models, simplifying maintenance and potentially reducing service needs.



FOR MAXIMUM
PRODUCTIVITY.

Unlike some stump grinders, Toro's design is not over-complicated. STX models feature Dingo® TX-style controls with two simple levers that are easy to learn and use. With tracked models that travel easily over muddy areas, Intelli-Sweep® for optimal cutting performance and transport speeds of over 4 mph, it's the perfect combination for maximum productivity.



TORO'S PATENTED, EASY-TO-USE CONTROLS

These offer a smooth operation with fewer levers/knobs than conventional stump grinders. An armrest near the joystick also reduces operator fatigue.

- 1. Steering system (forward, reverse, turn) allows for zero-turn capability
- 2. Sweep, lift/lower and engagement of the grinder head



STX-38
23214



STX-26
23208



SGR-13
22619

THE SGR-13 HANDLEBAR STUMP GRINDER

Well balanced, easy to operate and simple to maintain, the SGR-13 turns stumps into mulch without breaking a sweat. With the exclusive cutting wheel featuring easily replaceable grinder teeth, the SGR-13 offers the smoothest cutting experience of any walk-behind grinder on the market.

STX-38 AND STX-26 FEATURES



INTELLI-SWEEP®
Intelli-Sweep® automatically adjusts cutting-head sweep speed based on the load on the wheel, so the engine runs efficiently during heavy loads. This reduces machine stress, increases productivity and minimises maintenance.



FASTER AND EASIER
From pine to oak, the Toro STX hydraulic stump grinder turns stumps to chips quickly and efficiently.



ADVANCED CUTTER HEAD
Hydraulically driven cutting head with 75.7 lpm hydraulic flow directly to cutter head for maximum performance.



HIGH-DRIVE TRACK SYSTEM
Low centre of gravity and large footprint increases stability on hillsides. Tracks handle soft, wet ground conditions, climb curbs and allow zero-turn capability.



SPECIALISED EQUIPMENT FOR TURF RENOVATION

61 CM (24") STAND-ON AERATOR

The 61 cm (24") stand-on model is powered by a Kohler® CH440 engine. Electronic depth control allows operators to provide consistent core depth and quality, and its compact design fits through a standard 90 cm (36") wide gate.



	61 CM (24") STAND-ON AERATOR 29516*
Engine	Kohler® CH440
Fuel capacity	7 l (1.8 gal)
Working width	61 cm (24")
Depth	Up to 12.7 cm (5")
Width	90 cm (35.5")
Height	130 cm (51")
Length	174 cm (68.6")
Weight	388 kg (856 lb)
Ground speed	Up to 10.9 km/h (6.8 mph) fwd Up to 3.5 km/h (2.2 mph) rev
Coverage (per hour)	0.5 ha (1.3 acres)
Tines/blades/broom	36 tines

*Requires installation of CE Kit 135-7423

51 CM (20") HYDRAULIC SLIT SEEDER

Durable, lightweight and easy to use, Toro slit seeders handle like a self-propelled push mower. Operators can make a tight turn – even on hills – with only one hand. The variable-speed drive system operates in forward and reverse. Blades are made of high-carbon, heat-treated spring steel. A large 18.1 kg (40 lb) capacity seed mixer regulates seed delivery based on ground speed for even application.



	51 CM (20") HYDRAULIC SLIT SEEDER 23512
Engine	Kohler® Command PRO® CH395
Fuel capacity	6 l (1.6 gal)
Working width	51 cm (20")
Depth	Up to 2.5 cm (1")
Width	76.2 cm (30")
Height	71.1 cm (28") (handle folded) 114.3 cm (45") (handle working)
Length	68.6 cm (27") (handle folded) 132 cm (52") (handle working)
Weight	117.9 kg (260 lb)
Ground speed	4.8 km/h (3 mph) fwd 3.5 km/h (2.2 mph) rev
Hopper capacity	18.1 kg (40 lb)
Blades	10 verticutting blades

THE TORO BRC-28 HYDRO DRIVE BRUSH CUTTER

This tool levels brush, tall weeds, saplings and heavy vegetation with ease. This model features a pivoting deck with a flail blade that handles brush up to 1.8 m (6') tall and saplings up to 5 cm (2") in diameter. You can also easily manoeuvre this powerful machine in both forward and reverse with the one-hand control feature.



	BRC-28 BRUSH CUTTER 23521
Cutting width	71 cm (28")
Cutting height	9.5 cm (3¾")
Engine	Briggs and Stratton 11.4 kW (15.5 hp); petrol; electric start; carb compliant
Electric start	Standard
Fuel capacity	3.8 l (1 gal)
Deck	345 MPa (50 ksi) high strength steel; Pivoting +/- 10° w/ spring return
Spindle diameter	3.4 cm (1.375")
Transaxle	Hydro-Gear T2
Dimensions (L X W X H)	226 cm x 76 cm x 107 cm (89" x 30" x 42")
Weight	172.4 kg (380 lb)

LIMITED AVAILABILITY



THE TORO POWER BROOM

This multi-purpose broom comes with applications for every season, from brushing away snow to clearing debris and dethatching grass. Its innovative features allow for the high performance and ease of use that you expect from Toro.

	POWER BROOM 38700
Steering	Power steering with clutch left and right hand
Transmission	Friction Disc
Fuel capacity	4 l (1.1 gal)
Broom angle	40° total – 20° left/20° right
Broom width	96 cm (38") with 18 wafers
Broom diameter	63.5 cm (25")
Broom speed	200 rpm
Broom drive	Direct
Weight	158.7 kg (350 lb)
Starter	Recoil



DINGO® TRACKED RANGE

TX 1300 & TX 1000 TURBO SPECIFICATIONS

	DINGO TX 1300 22370
A Wheelbase	99.0 cm (39")
B Ground clearance	14.9 cm (5.9")
Overall width	116.8 cm (46") w/ bucket
C Overall length	261.8 cm (103.1") w/ bucket 215.6 cm (84.9") w/o bucket
D Overall height	143.5 cm (56.5") w/ bucket
E Max operating height	337.8 cm (133")
F Hinge pin height	277.3 cm (109.2") extended 227.0 cm (89.4") retracted
G Dump height	230.3 cm (90.7") extended 180.0 cm (70.9") retracted
H Dump angle	38°
I Reach – fully raised	67.8 cm (26.7")
Ground speed (Fwd)	7.6 km/h (4.7 mph)
Weight	1,749.9 kg (3,858 lb)
Tip capacity	1,684.6 kg (3,714 lb)
Rated operating capacity (35% of tip capacity)*	280.3 kg (618 lb) extended 589.6 kg (1,300 lb) retracted
Engine	27 kW (37 hp) Yanmar® diesel
Fuel type	Diesel
Air filter	Remote dual element
Cooling system	Combo downflow radiator and oil cooler, independent fuel cooler
Fuel tank	42 l (11 gal)
Oil capacity	4.7 l (1.2 gal)
Loader arms	Radial
Hydraulic pressure	221 bar (3,200 psi)
Hydraulic flow	Traction: 50.7 lpm (each pump); Auxiliary: 54.1 lpm
Reservoir capacity	34.8 l (9.2 gal)
Tracks	MERT track with "TF" style tread
Traction	Dual hydrostatic pump
Track length	321.5 cm x 23.1 cm (126.6" x 9.1")
Ground pressure	37.9 kPa (5.5 psi)

	DINGO TX 1000 TURBO NARROW 22588	DINGO TX 1000 TURBO WIDE 22587
A Wheelbase	99 cm (40")	
B Ground clearance	14.9 cm (5.9")	
Overall width	87.9 cm (34.6")	101.3 cm (39.9")
C Overall length	264.2cm (104") with Bucket 210.8cm (83") w/o Bucket	
D Overall height	138.7cm (54.6")	
E Max operating height	269.7 cm (106.2")	
F Hinge pin height	205.7 cm (81")	
G Dump height	153.2 cm (60.3")	
H Dump angle	40°	
I Reach – fully raised	59.2 cm (23.3")	
Ground speed (Fwd/Rev)	6.6 km/h (4.1 mph)	6.6 km/h (4.1 mph)
Weight	1,282 kg (2,826 lb)	1,320 kg (2,911 lb)
Rated operating capacity (35% of tip capacity)*	454 kg (1,000 lb)	
Engine	Yanmar® 3TNV80FT Turbo Diesel Tier 4** & EU Stage 5* compliant	
Manufacturer's gross HP rating at RPM**	18.4 kW (24.7 hp) @ 2,600 rpm	
Displacement	1.27 l (77 in³)	
Fuel type	Diesel	
Air filter	Two-stage, heavy-duty, remote: primary and safety elements	
Cooling system	Combo crossflow radiator and oil cooler	
Fuel tank	38.8 l (10.2 gal)	
Oil capacity	3.6 l (.9 gal)	
Loader arms	Vertical lift	
Hydraulic pressure	207 bar (3,000 psi)	
Hydraulic flow	Traction: 46.5 lpm (each pump); High flow: 50 l/min; Low flow: 18.5 L/min	
Reservoir capacity	32.5 l (8.6 gal)	
System capacity	43.5 l (11.5 gal)	
Tracks	MERT B-Tread	MERT Turf Friendly Tread
Traction	Dual Hydrostatic Pump	
Track length x width	321.5 cm x 14.9 cm (126.6" x 5.9")	321.6 cm x 23.1 cm (126.6" x 9.1")
Ground pressure	42 kpa (6.1 psi)	28.2 kPa (4.1 psi)

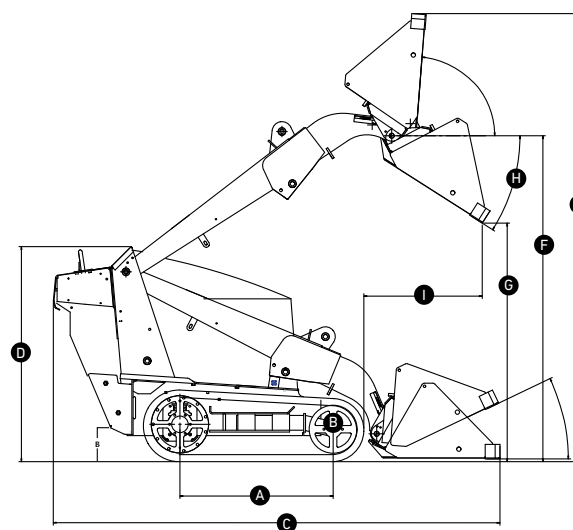
TX 700 SPECIFICATIONS

	DINGO TX 700 NARROW 22351	DINGO TX 700 WIDE 22352
A Wheelbase	99.0 cm (39")	
B Ground clearance	13.3 cm (5.25")	
Overall width	86.9 cm (34.2")	102.1 cm (40.2")
C Overall length	261.1 cm (102.8") w/ bucket; 208.3 cm (82") w/o bucket	
D Overall height	140.5 cm (55.3")	
E Max operating height	246.4 cm (97")	
F Hinge pin height	186.7 cm (73.5")	
G Dump height	134.4 cm (52.9")	
H Dump angle	42°	
I Reach – fully raised	78.7 cm (31")	
Ground speed (Fwd/rev)	4.5 mph	
Weight	1,140.3 kg (2,514 lb)	1,180.2 kg (2,602 lb)
Tip capacity	989.7 kg (2,182 lb)	
Rated operating capacity (35% Of tip capacity)*	346.5 kg (764 lb)	
Engine	Yanmar 3TNV80F	
Manufacturer's gross HP rating at RPM**	18 kW (24.5 hp) @ 3,600 rpm	
Displacement	1262 cc (77 in³)	
Fuel type	Diesel	
Air filter	Remote single element	
Cooling system	Combo downflow radiator and oil cooler	
Fuel tank	20.8 l (5.5 gal)	
Oil capacity	3.4 l (3.6 quarts)	
Loader arms	Radial	
Hydraulic pressure	207 bar (3,000 psi)	
Hydraulic flow	Traction: 54.9 lpm (each pump) Auxiliary: 51.9 lpm	
Reservoir capacity	37.9 l (10 gal)	
Tracks	Camso® B-Tread	Camso Turf Friendly
Traction	Dual hydrostatic pump	
Track length x width	13.7 cm x 321.6 cm (5.4" x 126.6")	23.1 cm x 321.6 cm (9.1" x 126.6")
Ground pressure	44.1 kPa (6.4 psi)	33.1 kPa (4.8 psi)

35+

**DINGO
ATTACHMENTS
AVAILABLE**

Learn more at toro.com



Dimensions

A Wheelbase	F Hinge pin height
B Ground clearance	G Dump height
C Overall length	H Dump angle
D Overall height	I Reach
E Maximum Operating Height	

* Per ISO 14397-1
** Per SAE 1995

**IS YOUR DINGO®
ON TRACK?**

A LOW-IMPACT FOOTPRINT THAT'S GENTLE ON TURF.

Genuine Toro tracks are ideal for the demands of any jobsite. Long-lasting, aramid reinforced tracks disperse weight evenly for a light footprint on turf, while delivering better traction in sandy or wet ground conditions.

The Dingo TX, STX and TRX models offer versatile narrow track options for enhanced grip or wide track versions that are gentle on the turf.

Protect your investment, always ask for Genuine Toro® Parts.

Learn more at toro.com

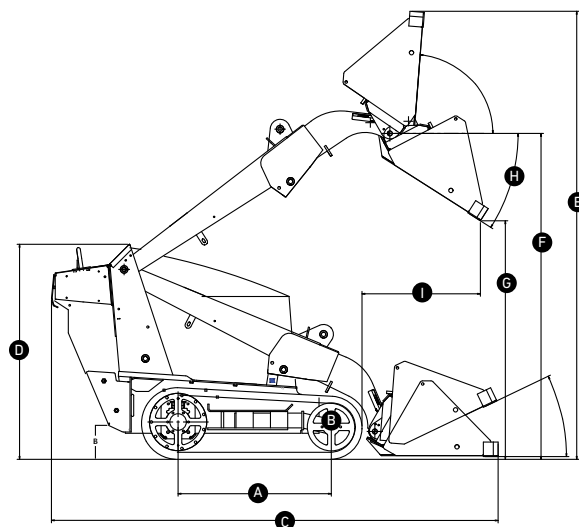
DINGO® RANGE



TX 427 & TX 525 SPECIFICATIONS

	TX 525 NARROW 22323	TX 525 WIDE 22324	TX 427 NARROW 22321	TX 427 WIDE 22322
A Wheelbase	79.2 cm (31.2")			
B Ground clearance	11.6 cm (4.6")			
Overall width	85.5 cm (33.7")	104.1 cm (41")	85.5 cm (33.7")	104.1 cm (41")
C Overall length	233.6 cm (92") w/ bucket; 179.5 cm (70.7") w/o bucket			
D Overall height	117.0 cm (46.1")			
E Max operating height	228.8 cm (90.1")			
F Hinge pin height	167.1 cm (65.8")			
G Dump height	117.0 cm (46.1")			
H Dump angle	38°			
I Reach – fully raised	55.3 cm (21.8")			
Ground speed (Fwd/Rev)	Fwd: 0–4.5 mph; Rev: 0–2.0 mph			
Weight	863.6 kg (1,904 lb)	913.0 kg (2,013 lb)	853.6 kg (1,882 lb)	902.6 kg (1,990 lb)
Tip capacity	716.6 kg (1,580 lb)		693.9 kg (1,530 lb)	
Rated operating capacity (35% Of tip capacity)*	250.8 kg (553 lb)		242.6 kg (535 lb)	
Engine	Kubota D902		Kohler Command PRO Series CH 740	
Manufacturer's gross HP rating at RPM**	18.5 kW (24.8 hp) @ 3,200 rpm		18.6 kW (25 hp) @ 3,600 rpm	
Displacement	901 cc (55 in³)		725 cc (44 in³)	
Fuel type	Diesel		Petrol	
Air filter	Two-stage, heavy-duty, remote			
Cooling system	Liquid Cooled		Air Cooled	
Fuel tank	23 l			
Oil capacity	3.63 l		2.95 l	
Loader arms	Radial			
Hydraulic pressure	207 bar (3,000 psi)			
Hydraulic flow	Traction: 64 lpm (each pump); Auxiliary: 31.5 lpm		Traction: 64 lpm (each pump); Auxiliary: 43.2 lpm	
Reservoir capacity	37.8 l			
Tracks	Sprocket-drive, 10 road wheels per side			
Traction	Dual hydrostatic pump			
Track length x width	245.3 cm x 14.9 cm (96.6" x 5.9")	245.3 cm x 24.1 cm (96.6" x 9.5")	245.3 cm x 14.9 cm (96.6" x 5.9")	245.3 cm x 24.1 cm (96.6" x 9.5")
Ground pressure	35.9 kPa (5.2 psi)	23.4 kPa (3.4 psi)	35.2 kPa (5.1 psi)	24.1 kPa (3.5 psi)

* Per ISO 14397-1
** Per SAE 1995



Dimensions

- A Wheelbase
- B Ground clearance
- C Overall length
- D Overall height
- E Maximum operating height
- F Hinge pin height
- G Dump height
- H Dump angle
- I Reach



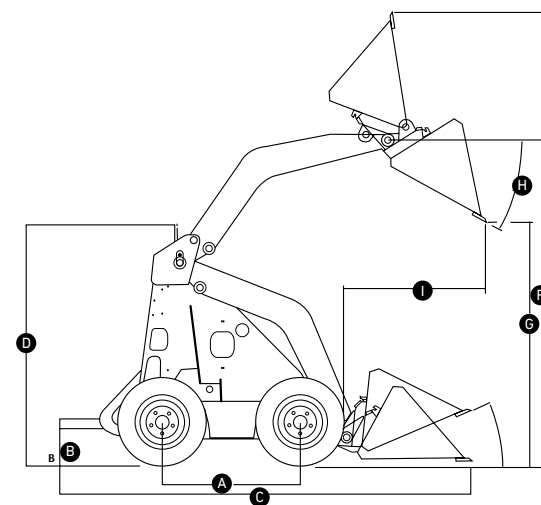
eDINGO® 500 SPECIFICATIONS

	eDingo 500 22219
A Wheelbase	71.1 cm (28")
B Ground clearance	10.8 cm (4.25")
Overall width	76.2 cm (30")
C Overall length	223.5 cm (88") w/ bucket; 168.2 cm (66.25") w/o bucket
D Overall height	137.8 cm (54.25")
E Max operating height	269.2 cm (106")
F Hinge pin height	205.7 cm (81")
G Dump height	154.9 cm (61")
H Dump angle	38°
I Reach – fully raised	54.6 cm (21.5")
Ground speed (Fwd/Rev)	2.75 mph
Weight	1,062 kg (2,342 lb)
Tip capacity	567 kg (1,251 lb)
Rated operating capacity (35% of tip capacity)*	233 kg (515 lb)
Battery	Lithium-ion
Charger	1.2 kW on-board
Capacity	13.57 kW
Fuel type	N/A
Air filter	N/A
Cooling system	N/A
Fuel tank	N/A
Oil capacity	N/A
Loader arms	Radial
Hydraulic pressure	224 bar (3,250 psi)

DINGO 323 & 320-D SPECIFICATIONS

	DINGO 323 22318	DINGO 320-D 22337CP
A Wheelbase	71.1 cm (28")	
B Ground clearance	14.7 cm (5.8") front and rear	
Overall width	102.8 cm (40.5") standard tyres; 88.9 cm (35") narrow tyres	
C Overall length	208.8 cm (82.2") w/ bucket; 157.5 cm (62") w/o bucket	
D Overall height	123.7 cm (48.7")	
E Max operating height	231.6 cm (91.2")	
F Hinge pin height	167.6 cm (66")	
G Dump height	119 cm (47")	
H Dump angle	34°	
I Reach – fully raised	71.1 cm (28")	
Ground speed (Fwd/Rev)	0–3.7 mph	0–3.0 mph
Weight	710.7 kg (1,567 lb)	781.0 kg (1,722 lb)
Tip capacity	467.2 kg (1,030 lb)	475.3 kg (1,048 lb)
Rated operating capacity (50% of tip capacity)*	233.6 kg (515 lb)	237.6 kg (524 lb)
Engine	Kohler® Command Series CH23	Kubota D722
Manufacturer's gross HP rating at RPM**	17.2 kW (23 hp) @ 3,600 rpm	14.9 kW (20 hp) @ 3,600 rpm
Displacement	674 cc (41 in³)	719 cc (43.88 in³)
Fuel type	Petrol	Diesel
Air filter	Two-stage, heavy-duty, remote	
Cooling system	Air Cooled	Liquid Cooled
Fuel tank	42.4 l	15 l
Oil capacity	1.9 l	3.2 l
Loader arms	Radial	
Hydraulic pressure	224 bar (3,250 psi)	
Hydraulic flow	40.9 lpm high-flow hydraulic circuit, 15.1 lpm low-flow hydraulic circuit	
Reservoir capacity	64 l	56 l

* Per ISO 14397-1
** Per SAE 1995



Dimensions

- A Wheelbase
- B Ground clearance
- C Overall length
- D Overall height
- E Maximum operating height
- F Hinge pin height
- G Dump height
- H Dump angle
- I Reach

TREE CARE & MATERIAL HANDLING



STX RANGE

STX 38, 26 SPECIFICATIONS

		STX 38 23214	STX 26 23208
ENGINE	Engine	Kohler® Command PRO® ECV980 980 cc 28.3 kW (38 hp) 4-stroke petrol air-cooled engine	Kawasaki® FX-730V 726 cc 19.3 kW (26 hp) 4-stroke petrol air-cooled engine
	Cooling system	Air	Air
	Fuel tank	18 l	18 l
	Oil capacity	1.9 l	1.8 l
	Starter	Electric start	Electric start
	Hour meter	Standard	Standard
	Transport speed	4.5 mph	4.5 mph
HYDRAULIC SYSTEM	Flow rate	57 lpm to each side; gear pump with a flow rate of 75.7 lpm to the piston engine that drives the cutting head	51.1 lpm hydraulic flow to cutter head; 38 lpm of hydraulic flow to each track
	Capacity	38 l	23 l
	Hydraulic oil cooler	Standard	Standard
TRACK	Size, material	15 cm (5.9") wide – endless nylon reinforced rubber track	15 cm (5.9") wide – endless nylon reinforced rubber track
	Track drive	Sprocket-drive; 3 road wheels per side Traction dual hydrostatic pump	Sprocket-drive; 3 road wheels per side Traction dual hydrostatic pump
RAD	Cutting wheel	57 cm (22.4") diameter to tooth, 2.5 cm (1") thick, 16 Greenteeth® Cutting Teeth	48 cm (18.9") diameter to tooth, 1.9 cm (.75") thick, 12 Greenteeth® Cutting Teeth
	Cutting depth	46 cm (18.1") below grade	32 cm (12.6") below grade
	Cutting height	88 cm (34.6") above grade	88 cm (34.6") above grade
	Head swing	132 cm (52") radius x 60° sweep arc	120 cm (47") radius x 90° sweep arc
DIMENSIONS	Weight	794 kg (1,750.5 lb)	544 kg (1,199.3 lb)
	(LxWxH) Dimensions	241 cm x 87 cm x 130 cm (94.8" x 34.2" x 51.1")	198 cm x 87 cm x 122 cm (78" x 34.2" x 48")



STX RANGE

SGR 13 SPECIFICATIONS

		SGR 13 22615
Engine		Honda GX390; 9.7 kW (13.0 hp); petrol
Starter		Recoil
Clutch		Centrifugal
Wheel		24.3 cm (9.5") diameter cutter wheel; 3 grinder teeth
Cutter depth		27.9 cm (11") below grade
Cutter height		35.5 cm (14") above grade
Belt		Double 3V Belt
Dimensions (W x L x H)		76.2 cm x 193 cm x 106.6 cm (30" x 76" x 42")
Weight		109 kg (240 lb)
Warranty		1 year or 1,000 operating hours (See Operator's Handbook for terms & conditions)

ELECTRIC ULTRA BUGGY®



		electric ULTRA BUGGY® 68037
DIMENSIONS	A Wheelbase	104 cm (41")
	B Dual wheel platform down (L x W x H)	282 x 106.7 x 139.7 cm (111 x 42 x 55")
	Dual wheel platform up (L x W x H)	241.3 x 106.7 x 139.7 cm (95 x 42 x 55")
	Single wheel platform down (L x W x H)	82 x 80.65 x 139.7 cm (111 x 31.5 x 55")
	Single wheel platform up (L x W x H)	241.3 x 80.65 x 139.7 cm (95" x 31.5 x 55")
	Ground speed (Fwd/Rev)	0–6 mph / 0–4 mph
	Weight	694 kg (1,530 lb)
Tub volume	0.45 m³ (16 ft³)	
Max load capacity	1,136 kg (2,500 lb)	
MOTOR	Battery	HyperCell lithium-ion battery
	Run Time	Up to 8 continuous hours
	Charger	1.2 kW on-board
	Charging Time	Up to 8 hours for full charge

TRENCHING



SPECIFICATIONS

TRX RANGE

TRX 16, 250 & 300 SPECIFICATIONS

		TRX-16 22972	TRX-250 22983	TRX-300 22984
POWER SYSTEM	Engine	10.8 kW (14.5 hp) @ 3,600 rpm Kawasaki® FS481V, V-twin	18.3 kW (24.5 hp) @ 3,600 rpm Toro® V-twin	19.8 kW (26.5 hp) @ 3,600 rpm Kohler® ECV749, EFI
	Cooling system	Air		
	Fuel tank	7.9 l	15.1 l	15.1 l
	Oil capacity	1.7 l	2.4 l	1.9 l
	Start method	Recoil	Electric	Electric
	Hour meter	Standard	Standard	Standard
HYDRAULIC SYSTEM	Transport speed	2.4 mph / 1.5 mph 64.3 m/min (211 ft/min) / 40.2 m/min (132 ft/min)	2.3 mph / 1.5 mph 61.6 m/min (202 ft/min) / 40.2 m/min (132 ft/min)	2.3 mph / 1.5 mph 61.6 m/min (202 ft/min) / 40.2 m/min (132 ft/min)
	Hydraulic pressure	200 bar (2,900 psi)	184 bar (2,670 psi)	180 bar (2,610 psi)
	Hydraulic flow	Trencher: 38 lpm Traction (each pump): 36 lpm	Trencher: 50.0 lpm Traction: 61.3 lpm transport 11.4 lpm trenching	Trencher: 50.0 lpm Traction: 61.3 lpm transport 11.4 lpm trenching
	Reservoir capacity	23.8 l	23.8 l	23.8 l
	Hydraulic oil cooler	Standard	Standard	Standard
HEAD SHAFT SPEED		226 rpm with 211.67 m/kg (315 ft/lb) of torque	210 rpm with 334.64 m/kg (498 ft/lb) of torque	210 rpm with 334.64 m/kg (498 ft/lb) of torque
TRACKS	Width	15 cm (5.9") wide – endless nylon reinforced rubber	15 cm (5.9") wide – endless nylon reinforced rubber	15 cm (5.9") wide – endless nylon reinforced rubber
	Drive	Sprocket-drive, 3 road wheels per side	Sprocket-drive, 3 road wheels per side	Sprocket-drive, 3 road wheels per side
	Traction	Dual hydrostatic pump	Two-section hydraulic pump with two hydraulic motors (one for each track)	Two-section hydraulic pump with two hydraulic motors (one for each track)
GROUND PRESSURE		61 cm (24") boom = 28 kPa (4.1 psi) 91 cm (36") boom = 30 kPa (4.3 psi) 122 cm (48") boom = 30 kPa (4.4 psi)	61 cm (24") boom = 28 kPa (4.1 psi) 91 cm (36") boom = 30 kPa (4.4 psi) 122 cm (48") boom = 31 kPa (4.5 psi)	61 cm (24") boom = 28 kPa (4.1 psi) 91 cm (36") boom = 30 kPa (4.4 psi) 122 cm (48") boom = 31 kPa (4.5 psi)
DIMENSIONS	Overall dimensions with 24" boom up and chain (W x L x H)	86 cm x 210 cm x 117 cm (33.8" x 82.5" x 46")	86 cm x 210 cm x 117 cm (33.8" x 82.5" x 46")	86 cm x 210 cm x 117 cm (33.8" x 82.5" x 46")
	Wheelbase	58 cm (23")	58 cm (23")	58 cm (23")
	Weight	505 kg (1,114 lb)	501 kg (1,104 lb)	505 kg (1,114 lb)
BOOM OPTIONS	Depths	61 cm, 91 cm and 122 cm (24", 36" and 48")	61 cm, 91 cm and 122 cm (24", 36" and 48")	61 cm, 91 cm and 122 cm (24", 36" and 48")
	Widths	10 cm and 15 cm (4" and 6")	10 cm and 15 cm (4" and 6")	10 cm, 15 cm and 20 cm (4" and 6")

*20 cm (8") chain conversion kit available through parts only

MISSING A TOOTH?



TORO HAS YOU COVERED

Choosing Genuine Toro Stump Grinder Tooth Kits means opting for quality and performance. You can count on our 3-pack, 6-pack and 12-pack grinder tooth kits to get everything you need in one box.

Toro Genuine Parts are engineered specifically for your Toro equipment, so you know that you're getting the right part with the right specifications. We also offer 48-hour Toro-backed delivery on most parts, with support to get your equipment back in action faster.

Learn more at toro.com





TORO

PEOPLE WHO BUY TORO® EQUIPMENT ALSO PURCHASE

TORO PARTS & ACCESSORIES

DON'T FORGET THESE TORO MUST-HAVES



HEARING PROTECTION
Available with or without radio



ALL PURPOSE GREASE
Available in tube of 85g (3 oz), 113g (4 oz) and 397g (14 oz)



ENGINE OIL
Designed for Toro air and liquid cooled engines.
0,95 liter (32 oz)



TORO RED PAINT
0,36 liter (12 oz) Can

Refer to the Sales Advantage App for the full list of paint options.



1 STUMP GRINDER TOOTH KITS

Choosing Genuine Toro Tooth Kits means opting for quality and performance. You can count on our 3-pack, 6-pack and 12-pack grinder tooth kits to get everything you need in one box.

2 FILTER KITS

Available for Dingo, TRX Trenchers and Stump Grinder models, the 50 hours and 200 hours filter kits keep you covered, including the filters you need for each maintenance. These kits are the quick and easy-to-use solution. Ask us for more information.

3 HYDRAULIC FLUID

Premium hydraulic fluid, premium transmission / hydraulic fluid, and PX Extended Life hydraulic fluid are available in 4/1 gallon cases or 5 gallon pails.

4 TRACK KITS

Durability, quality and outstanding maneuverability is what you get by choosing Genuine Toro Tracks for your compact utility loader.

CHOOSE THE BEST FOR YOUR
TORO EQUIPMENT

ALWAYS ASK FOR GENUINE TORO® PARTS



CONNECT AND SIMPLIFY

With myTurf Pro, you can track operating hour utilisation data by connecting your equipment with wireless hour meter accessory parts.



MANAGE AND MAINTAIN

Order parts, manage service schedules, create and assign work orders, track parts inventory, monitor fleet health and generate reports to track total cost of ownership.

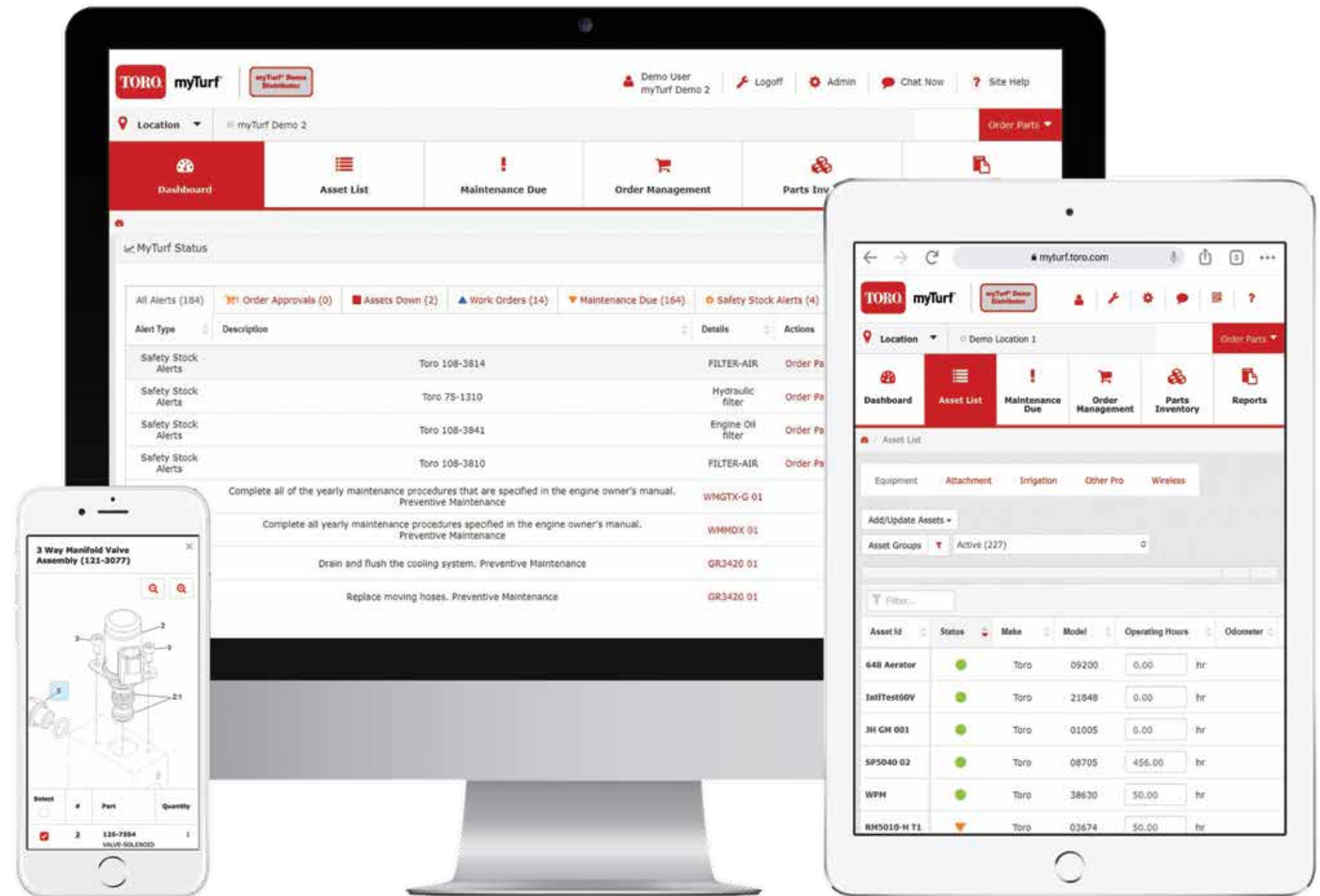
TORO® MYTURF® PRO. FLEET MANAGEMENT AT YOUR FINGERTIPS.



Turn valuable data into **actionable insights.**

myTurf Pro Web-based fleet management

Streamline your maintenance programme with this mobile-friendly platform that helps you track and manage all your equipment, regardless of brand. Using myTurf Pro puts real-time data at your fingertips to help you improve staff efficiency, lengthen the life of your equipment and reduce overall maintenance costs.



Learn more at toro.com



PROVEN PROTECTION FOR YOUR EQUIPMENT INVESTMENT.

Benefit from the full Toro experience — genuine Toro parts, qualified service partners, Toro quality and reliability — all backed by **Toro Protection Plus (TPP)** extended protection plans.

The **Toro Protection Plus (TPP)** Extended Protection Plan eliminates the hit your maintenance budget can take when the unforeseen happens. Coverage is available for new equipment, pre-owned equipment, and most Toro attachments and accessories.

With **TPP** you know you are protecting your investment with confidence.

- **0 € deductible** for parts and labor on covered repairs.
- **No machine depreciation** for reimbursement value
- **Transferable coverage** if ownership changes



TORO® RELIABILITY & QUALITY



QUALIFIED TORO TECHNICIANS



AUTHORISED TORO SERVICE PARTNER



GENUINE TORO PARTS



MINIMISED DOWNTIME



THERE IS NO SUBSTITUTE FOR TORO GENUINE PARTS

With Toro, quality and service don't end when you take delivery of your equipment. Genuine Toro parts are designed specifically for your machine to ensure that it performs as intended. For peace of mind, insist on Toro genuine parts.

WHEN WE SAY COUNT ON IT, WE MEAN IT

Every product that carries the Toro brand is backed by over 100 years of history, innovation and timeless dependability. We never stop investing in research and development to give our customers the latest features. That's why Toro is one of the best-known, most trusted brands in the business.

We also stand behind our products with a nationwide network of knowledgeable dealers for parts and service support. **Real people. Real support.**



toro.com

Worldwide Headquarters
The Toro Company
8111 Lyndale Ave. So.
Bloomington, MN 55420 U.S.A.
Phone: (1) 952 888 8801

©2024 The Toro Company.
All Rights Reserved.

25-701-GB



facebook.com/torocompany
twitter.com/TheToroCompany
youtube.com/ToroCompanyEurope

Products depicted in this literature are for demonstration purposes only. Actual products offered for sale may vary in use, design, required attachments and safety features. We reserve the right to improve our products and make changes in specifications, design and standard equipment without notice and without incurring obligation. See your distributor for details on all our warranties.