



Commercial Products

Toro Sprayer

Calibration Tool

User Guide

&

Installation Instructions

Table of Contents

Introduction 2

Program Instructions 4

Toro Software End User License Agreement 17

Introduction

To accurately calibrate the sprayer the Spray technician or the Superintendent must be able to verify the following:

- What the sprayer is putting out.
- How consistent each and every nozzle on the sprayer is.
- Calculate the proper amount of product to add to the water.
- How much water is required to cover the desired area.

To assist in the sprayer calibration process the Toro Sprayer Calibration tool has been developed,

This program will allow the spray technician or the superintendent to quickly and accurately check the performance of the sprayer and also calculate the desired application rate, product to water ratio and the amount of water needed to cover the desired area.

This booklet will explain the functions of the program and the information that it will provide.

Windows® PC

Installation Instructions

Download the ToroSprayers.exe file

Double click on the file to unzip.

The files will be unzipped into the directory where you downloaded the file.

Double click on setup.exe

This will install the program on your computer.

Starting the Program

Click on "Start" on the Windows® toolbar.

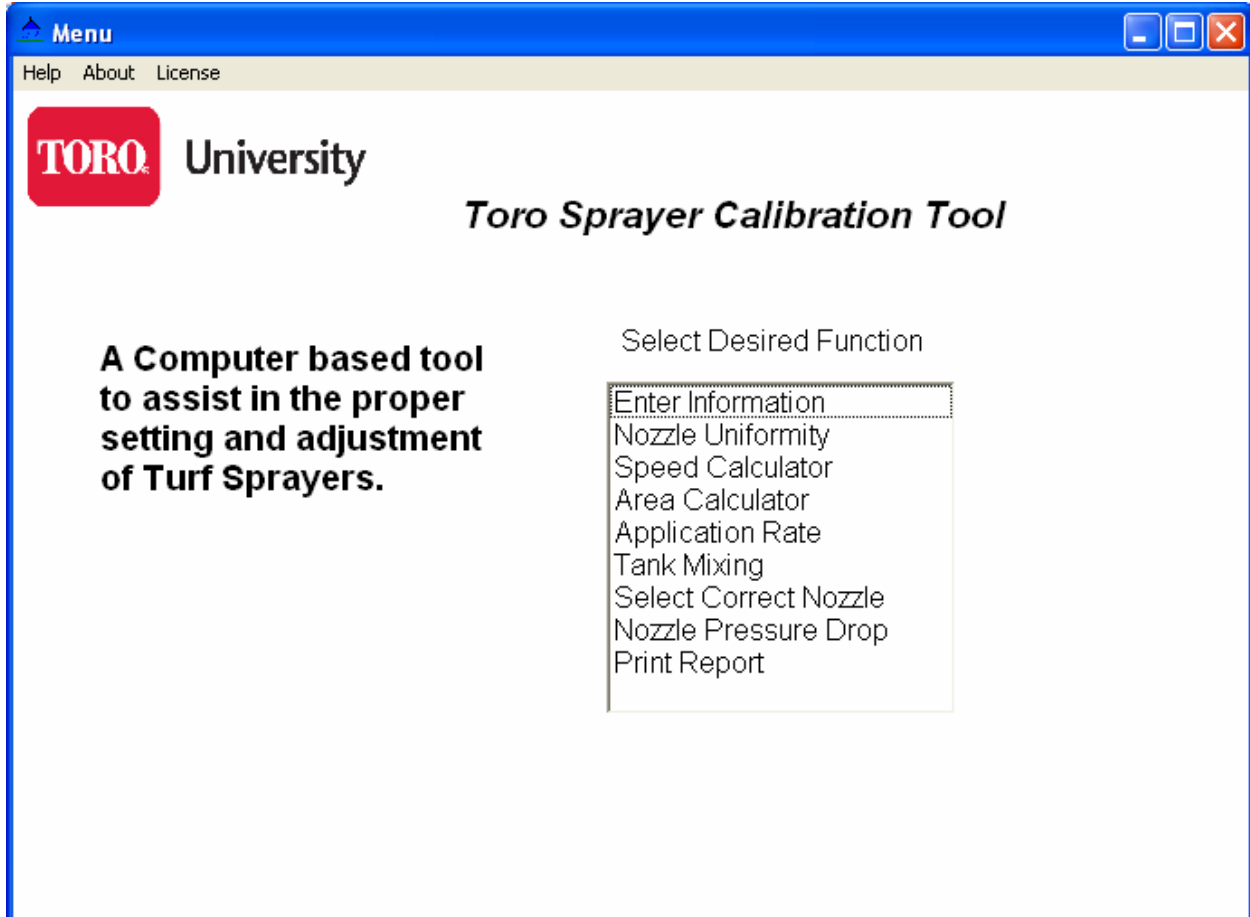
Click on "Programs".

Click on "Toro Sprayers".

Click on "Toro Sprayers" to Start the Program.

Toro Sprayer Calibration Tool Program Instructions

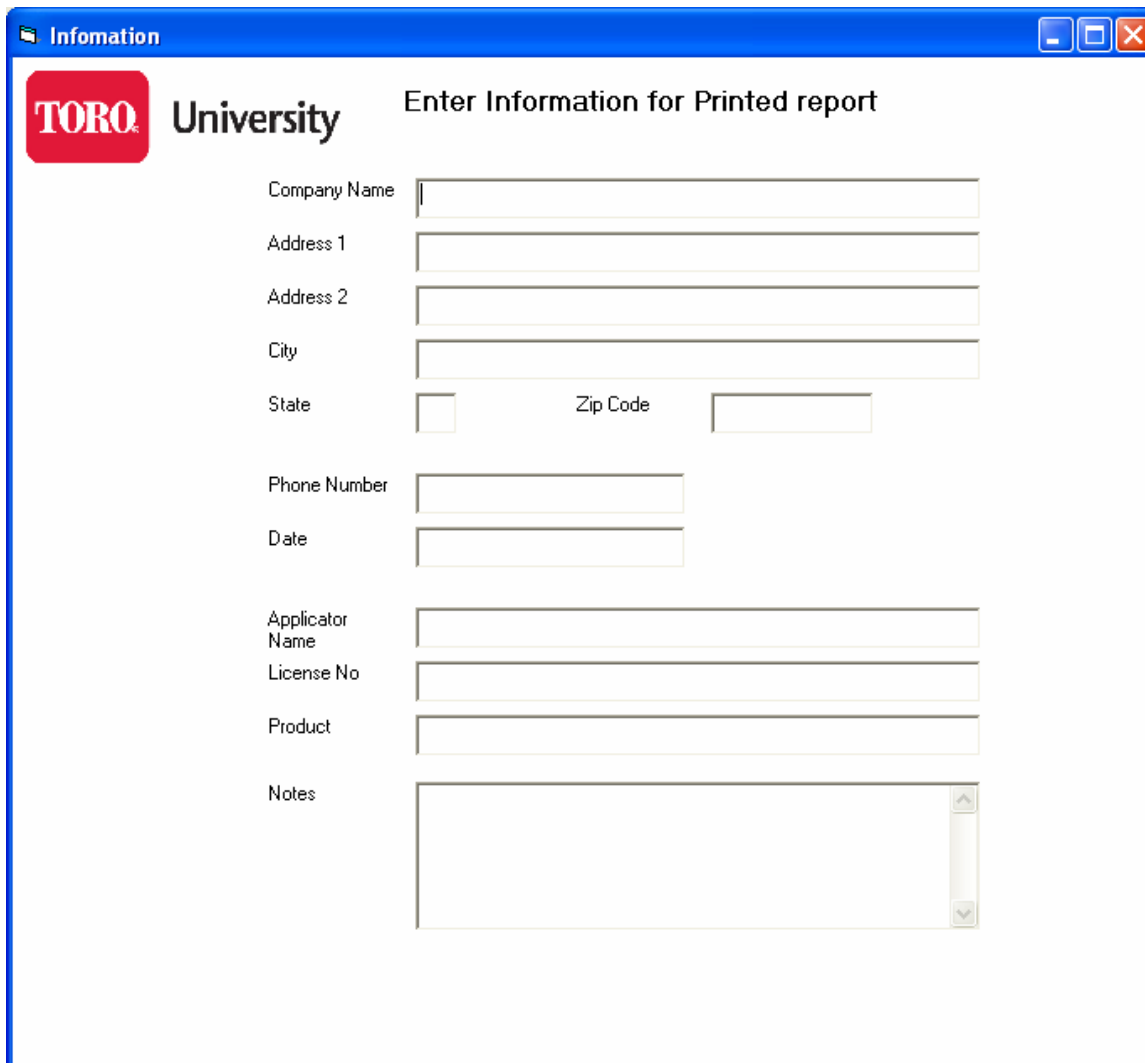
From the main menu screen select the desired function.



Select from the following program functions:

1. Enter Information
2. Nozzle Uniformity.
3. Speed Calculator.
4. Area Calculator
5. Application Rate.
6. Tank Mixing.
7. Select Correct Nozzle.
8. Nozzle Pressure Drop.
9. Print Report

Enter Information



TORO University Enter Information for Printed report

Company Name

Address 1

Address 2

City

State Zip Code

Phone Number

Date

Applicator Name

License No

Product

Notes

This screen allows the user to enter information that will be included on a report that can be printed at the end of the calculations.

There are areas to enter the following information.

1. Company Name
2. Address
3. Phone Number
4. Date
5. Applicator Name
6. License Number
7. Product Applied
8. Additional Notes

Nozzle Uniformity

TORO University Nozzle Uniformity Calculator

Enter Variation Percentage (Standard: 5 to 10 Percent) Average Output (Ounces)

Enter Catch Time In Seconds (Standard: 20 to 60 Seconds) Minimum Allowable

Enter Pressure (From Nozzle Spec Sheet) Maximum Allowable

G.P.M Per Nozzle

Enter amount For Each Nozzle from Nozzle Catch Test (Ounces Caught per Nozzle)

Nozzle 1	<input type="text" value="28"/>		Nozzle 10	<input type="text" value="28"/>
Nozzle 2	<input type="text" value="28"/>		Nozzle 11	<input type="text" value="0"/>
Nozzle 3	<input type="text" value="26"/>	Low	Nozzle 12	<input type="text" value="0"/>
Nozzle 4	<input type="text" value="28"/>		Nozzle 13	<input type="text" value="0"/>
Nozzle 5	<input type="text" value="30"/>	High	Nozzle 14	<input type="text" value="0"/>
Nozzle 6	<input type="text" value="28"/>		Nozzle 15	<input type="text" value="0"/>
Nozzle 7	<input type="text" value="28"/>		Nozzle 16	<input type="text" value="0"/>
Nozzle 8	<input type="text" value="28"/>		Nozzle 17	<input type="text" value="0"/>
Nozzle 9	<input type="text" value="28"/>		Nozzle 18	<input type="text" value="0"/>

Calculate Nozzle Output

Nozzle Decimal Output (Per Minute)

Nozzle Output in Ounces (Per Minute)

Calculate

Calculate Reset

The purpose of this program is to check the accuracy of the individual nozzles to be sure that they all fall within the entered variation percentage.

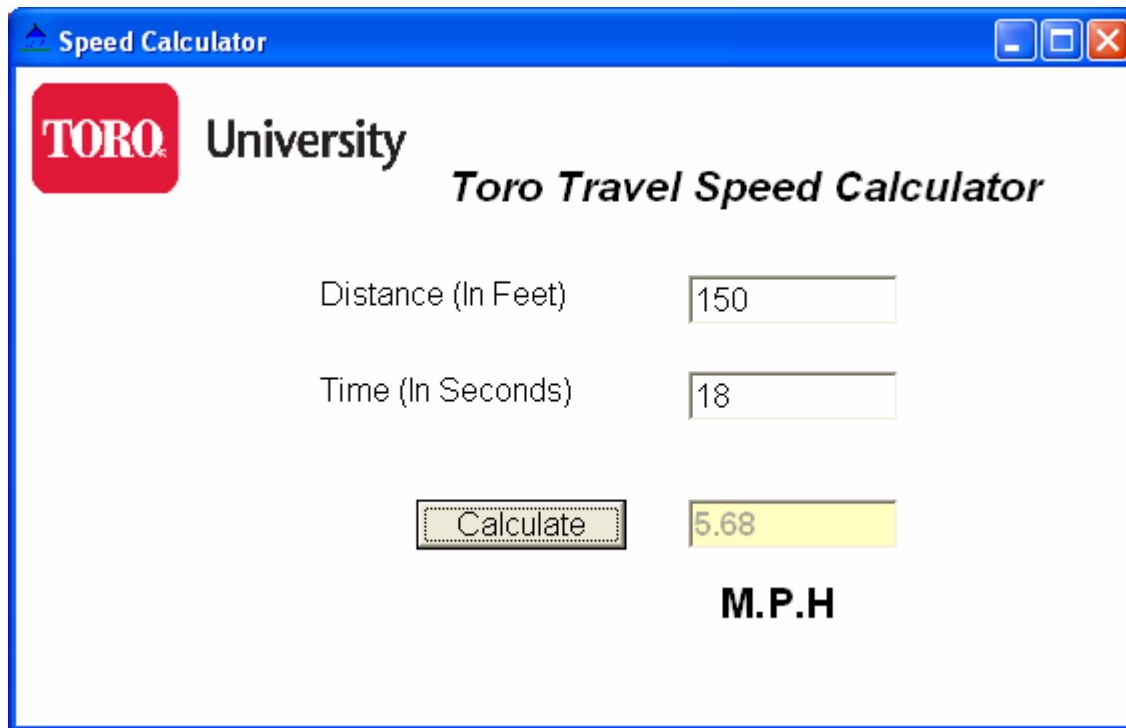
If the output of any of the nozzles is too high or too low, the program will indicate which nozzles do not fall within the acceptable range.

The program will also calculate the actual output in GPM that the sprayer is delivering.

This is used to compute the actual sprayer application rate in the later screens.

1. Nozzle Uniformity
 - a. Enter the allowable Nozzle Variation Percentage.
 - i. Usually 5 to 10%
 - b. Enter the Catch time in Seconds.
 - i. Used to calculate the GPM per Nozzle
 - c. Enter the pressure used in the Nozzle Catch test.
 - d. Enter the ounces caught per nozzle(In ounces)
 - i. Enter an amount for each nozzle on your sprayer.
 - ii. Program will determine how many nozzles you have on the sprayer and calculate the average output per nozzle.
 - e. Press Calculate.
 - i. The program will return the Average Output for the Nozzles.
 - ii. The maximum allowable output and the minimum allowable output.
 - iii. The program will also flag the nozzles that do not fall between this range.
 - iv. The program will also calculate the GPM per nozzle for use in the Application rate calculations.

Speed



The screenshot shows a software window titled "Speed Calculator" with a blue header bar. Inside the window, the Toro University logo is on the left, and the text "Toro Travel Speed Calculator" is centered. Below the logo, there are two input fields: "Distance (In Feet)" with the value "150" and "Time (In Seconds)" with the value "18". A "Calculate" button is positioned below these fields. To the right of the button, the result "5.68" is displayed in a yellow box, with "M.P.H" written below it.

To calibrate the sprayer the actual speed that the sprayer is traveling is needed. This speed number is used for the later calculations to calculate the actual application rate.

1. Speed Calculator
 - a. Enter the distance traveled in feet.
 - b. Enter the time in seconds to travel the entered distance.
 - c. Press Calculate.
 - i. This will display the MPH that you were traveling.
 - ii. This is needed for the Application rate calculation.

Area Calculator

Area

TORO University

Triangle

Base in Feet: 158

Height in Feet: 322

Calculate

Area in Sq Feet: 25438

Area in Acres: 0.58

The area of a Triangle equals, (Base times Height) divided by 2

To calculate area of a specific shape, select the desired shape from the drop-down box.

1. Area Calculator
 - a. Enter the requested Distance(s) in feet.
 - b. Press Calculate.
 - iii. This will display the Area in Square feet.
 - iv. This will display the Area in Acres.

Application Rate

TORO University

Calibration Rate

Gallons per Minute
(From Nozzle
Uniformity Screen)

M.P.H (From
Speed Calculator)

Nozzle Spacing
(In Inches)

0.26 **11.33**

G.P.K **G.P.A**


Now we will calculate the actual application rate that the sprayer is delivering.

1. Application Rate

- a. The program will pull the GPM from the previous screen and enter it in the Gallons per Minute field.
 - i. This can be changed if you desire.
- b. The program will also pull the MPH number from the previous screen.
 - i. This can also be changed if desired.
- c. Enter the nozzle spacing of your sprayer.
 - i. Standard on Toro sprayers is 20 inches.
- d. Press Calculate and the program will display application rate in both Gallons per 1000 SqFt (G.P.K) and Gallons per Acre (G.P.A)

Sprayer Calibration (Tank Mixing)

Sprayer Calibration Tank Mix


University
Toro Sprayer Calibration Tool
(Tank Mixing)

Product Label Rate - Ounces Per 1000 Square Feet. Manufacturers recommended Rate.	<input style="width: 90%;" type="text" value="6"/>
Sprayer Calibration Rate - Gallons per 1000 Square Feet Per Manufacturers Recommendation.	<input style="width: 90%;" type="text" value="1.2"/>
Area to be sprayed (in 1000 Square Feet)	<input style="width: 90%;" type="text" value="500"/>
Area to be sprayed (in Acres)	<input style="width: 90%;" type="text"/>

Ounces of Product per Gallon of Water	(Ounces)	<input style="width: 95%;" type="text" value="5"/>
Total Water required for Area to be sprayed	(Gallons)	<input style="width: 95%;" type="text" value="600"/>
Total Product required for Area to be sprayed	(Ounces)	<input style="width: 95%;" type="text" value="3000"/>
	(Gallons)	<input style="width: 95%;" type="text" value="23.4"/>

To calculate the actual amount of water and product needed to cover the desired area, enter the desired application rate for the product and the actual application rate for the sprayer. The tank-mixing screen will perform the appropriate calculations.

The program will display the amount of water required in gallons to cover the entered area. It will also display the amount of product required in ounces and gallons.

1. Tank Mixing
 - a. Enter the product application rate.
 - i. This is ounces of product per 1000 Square feet.
 - b. Enter the Sprayer Calibration rate.
 - i. In gallons per 1000 Square feet.
 - ii. This should be per the manufactures recommendation.
 - iii. This should also be the actual amount of water that the sprayer sprays.
 - iv. If needed you can convert Gallons per Acre to Gallons per 1000 Square feet by using the “Convert G.P.A. to G.P.K button.
 - c. Enter the area to be sprayed.
 - i. Either in 1000 Square feet.
 1. Entering 50 = 50,000 square feet.
 - ii. Or Acres.
 2. The program will convert it to 1000 Square feet.
 - d. Press calculate.
 - i. The program will display the ounces of product to be mixed per gallon of water.
 - ii. The program will also display the total amount of water needed to cover the enter area.
 - iii. The program will also return the total amount of product required in both gallons and ounces.
 - e. If the total water required is larger then the capacity of the sprayer tank then press “Multiple Tank Mix”
 - i. This will calculate the quantities of water and product for each individual tank fill.

Multiple Tank Mixing

	Tank 1 to 4	Tank 5
Enter Sprayer Tank Capacity (In Gallons)	135	
Total Water Required For Area to Be Sprayed	600	
Total Water Per Tank	135	60
Ounces per Gallon (Product)	5	5
Product (in Ounces) Per Tank	675	300
Product (In Gallons) Per Tank	5.27	2.34

Solve

In the event that the amount of water needed to cover the desired area is greater than the capacity of the sprayer, multiple tanks are needed. The program will calculate the proper mixing rate for multiple tanks.

1. Multiple Tank Mixing

- a. The program will enter the total water required for the area to be sprayed from the previous screen.
 - i. Enter the capacity of your sprayer tank.
 1. The program will return the total water per tank.
 2. The ounces per gallon of product required.
 3. The amount of product required for each tank.
 - ii. The first column is for complete tanks
 1. "Example Tank 1 to 2"
 - iii. The second column is for the last partial tank.

Nozzle Selection

TORO University Nozzle Selection

Enter Desired Application Rate in Gallons Per 1000 SqFt (G.P.K.)

Enter Application Speed in M.P.H.

Enter Nozzle Spacing in Inches.

G.P.M. per Nozzle

Acceptable Range

+

-

Refer to Nozzle Chart (Nozzle GPM Column)

To achieve the proper application rate from the sprayer the proper nozzle for the desired application rate needs to be selected.

1. Nozzle Selection Screen.
 - a. Enter the desired Application rate in G.P.K.
 - i. If needed press Convert G.P.A. to G.P.K. to convert Gallons per Acre to Gallons per 1000 square ft.
 - ii. The program will enter the converted value in the appropriate field.
 - b. Enter the Application speed in M.P.H.
 - c. Enter Nozzle spacing in Inches.
 - i. The program will return the G.P.M per nozzle output that is required to achieve the desired application rate and the speed and nozzle spacing that was entered.
 - ii. It will also display the acceptable maximum and minimum output of the nozzles.
 - iii. Use this information to select the proper nozzle.

Nozzle Pressure Drop

The screenshot shows a software window titled "Pressure Drop" with the TORO University logo. The main heading is "Calculate Actual Pressure Drop at the Sprayer Nozzles." The interface includes several input fields and a calculation button:

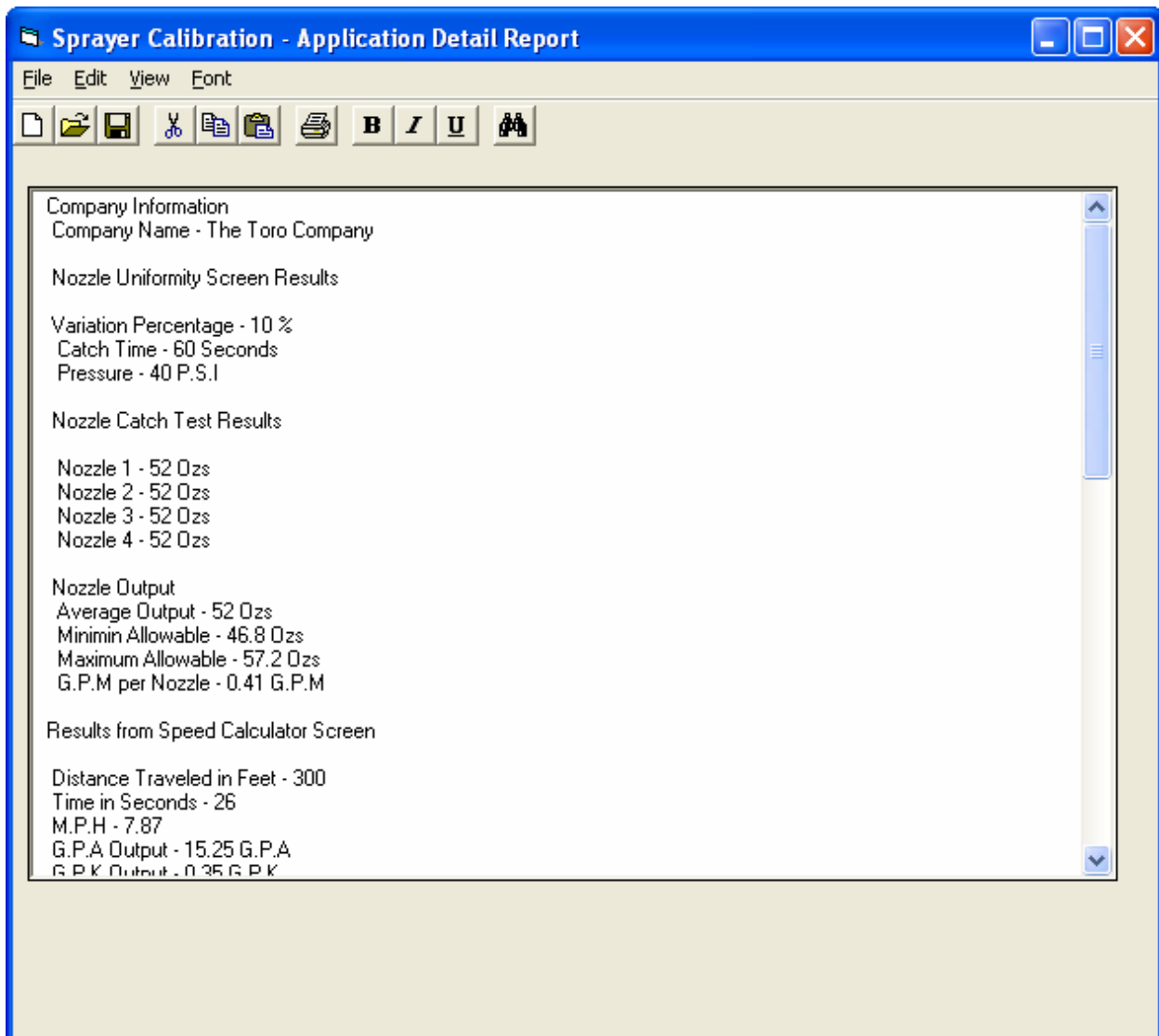
Actual Catch in G.P.M	<input type="text" value=".65"/>	<input type="text" value="165.04"/>	Actual Nozzle Pressure
Nozzle Chart Flow in G.P.M	<input type="text" value=".32"/>	<input type="text" value="40"/>	Pressure from Nozzle Chart

Below the input fields is a "Calculate" button and a "Convert Ounces to G.P.M" button.

When a situation is encountered where the proper application rate can not be achieved, this can indicate a problem with the sprayer. An area to check is the actual pressure at the nozzle. Pressure Drop Screen

- a. To troubleshoot an application rate problem we can calculate the actual pressure at the nozzle.
- b. Enter the actual G.P.M from a catch test.
- c. Enter the Nozzle Chart flow in G.P.M.
- d. Enter the Pressure from the Nozzle Chart.
- e. Press calculate.
 - i. The program will return the actual pressure at the nozzle that it takes to product the output that you got in the catch test.

Print Report



This screen will display the information collected from all of the calculation screens. This is useful for documenting the application rate, amount of chemical used, company name, date and applicator. It will collect all of the information used to perform the calculations.

The file can then be saved for further reference. If a printed copy is desired, the saved text file can be opened with Notepad, Wordpad or MS Word and printed from there.

TORO® SOFTWARE END USER LICENSE AGREEMENT

IMPORTANT: THIS SOFTWARE END USER LICENSE AGREEMENT ("AGREEMENT") IS A LEGAL AGREEMENT BETWEEN YOU AND TORO. READ IT CAREFULLY BEFORE USING THE SOFTWARE. IT PROVIDES A LICENSE TO USE THE SOFTWARE AND CONTAINS WARRANTY INFORMATION AND LIABILITY DISCLAIMERS. BY SELECTING THE DOWNLOAD OR INSTALL BUTTON AND USING THE SOFTWARE, YOU ARE CONFIRMING YOUR ACCEPTANCE OF THE SOFTWARE AND AGREEING TO BECOME BOUND BY THE TERMS OF THIS AGREEMENT. IF YOU DO NOT AGREE TO BE BOUND BY THESE TERMS, THEN DO NOT DOWNLOAD AND INSTALL THE SOFTWARE.

1. Definitions

- (a) "Toro" means The Toro Company.
- (b) "Software" means Toro Sprayer Calibration Tool software program(s) and corresponding documentation and online or electronic documentation.

2. License Grants

- (a) You may install and use the Software on a single desktop or laptop WINDOWS based computer and on handheld PDA's devices as specified at www.Toro.com/go17/CUSTSVC/SVCEDU/SPRAYER-SOFTWARE.HTML
- (b) You may make one copy of the Software in machine-readable form solely for backup purposes. You must reproduce on any such copy all copyright notices and any other proprietary legends on the original copy of the Software.
- (c) You agree that Toro may audit your use of the Software for compliance with these terms at any time, upon reasonable notice.
- (d) Your license rights under this Agreement are non-exclusive.

3. License Restrictions

- (a) Other than as set forth in Section 2, you may not make or distribute copies of the Software, or electronically transfer the Software from one computer to another or over a network.
- (b) You may not alter, merge, modify, adapt or translate the Software, or decompile, reverse engineer, disassemble, or otherwise reduce the Software to a human-perceivable form.
- (c) You may not sell, rent, lease, or sublicense the Software.
- (d) You may not modify the Software or create derivative works based upon the Software.
- (e) You may not export the Software into any country prohibited by the United States Export Administration Act and the regulations there under.
- (f) In the event that you fail to comply with this Agreement, Toro may terminate the license and you must destroy all copies of the Software (with all other rights of both parties and all other provisions of this Agreement surviving any such termination).

4. Ownership

The foregoing license gives you limited license to use the Software. Toro retains all right, title and interest, including all copyright and intellectual property rights, in and to, the Software and all copies thereof. All rights not specifically granted in this Agreement, including Federal and International Copyrights, are reserved by Toro.

5. WARRANTY DISCLAIMER

- (a) THE SOFTWARE IS PROVIDED TO YOU FREE OF CHARGE, AND ON AN "AS-IS" BASIS. TORO PROVIDES NO TECHNICAL SUPPORT OR WARRANTIES FOR THE SOFTWARE.
- (b) TORO DISCLAIMS ALL WARRANTIES AND REPRESENTATIONS, WHETHER EXPRESS, IMPLIED, OR OTHERWISE, INCLUDING THE WARRANTIES OF MERCHANTABILITY OR FITNESS FOR A PARTICULAR PURPOSE. ALSO, THERE IS NO WARRANTY OF NON-INFRINGEMENT AND TITLE OR QUIET ENJOYMENT. TORO DOES NOT WARRANT THAT THE SOFTWARE IS ERROR-FREE OR WILL OPERATE WITHOUT INTERRUPTION.
- (c) NO ORAL OR WRITTEN INFORMATION OR ADVICE GIVEN BY TORO, ITS DEALERS, DISTRIBUTORS, AGENTS OR EMPLOYEES SHALL CREATE A WARRANTY OR IN ANY WAY INCREASE THE SCOPE OF ANY WARRANTY PROVIDED HEREIN.
- (d) THE SOFTWARE USES ONLY U.S. UNITS OF MEASUREMENTS (GALLONS, ACRES, ETC.). ALL CALCULATIONS ARE BASED ON INDUSTRY STANDARDS AND SHOULD BE USED ONLY AS A GUIDE.
- (e) SOME STATES DO NOT ALLOW THE EXCLUSION OF IMPLIED WARRANTIES, SO THE ABOVE EXCLUSION MAY NOT APPLY TO YOU. THIS WARRANTY GIVES YOU SPECIFIC LEGAL RIGHTS AND YOU MAY ALSO HAVE OTHER LEGAL RIGHTS THAT VARY FROM STATE TO STATE.

6. LIMITATION OF LIABILITY

- (a) TORO SHALL NOT BE LIABLE TO YOU OR ANY THIRD PARTY FOR ANY INDIRECT, SPECIAL, INCIDENTAL, PUNITIVE, COVER OR CONSEQUENTIAL DAMAGES (INCLUDING, BUT NOT LIMITED TO, DAMAGES FOR THE INABILITY TO USE EQUIPMENT OR ACCESS DATA, LOSS OF BUSINESS, LOSS OF PROFITS, BUSINESS INTERRUPTION OR THE LIKE), ARISING OUT OF THE USE OF, OR INABILITY TO USE, THE SOFTWARE AND BASED ON ANY THEORY OF LIABILITY INCLUDING BREACH OF CONTRACT, BREACH OF WARRANTY, TORT (INCLUDING NEGLIGENCE), PRODUCT LIABILITY OR OTHERWISE, EVEN IF TORO OR ITS REPRESENTATIVES HAVE BEEN ADVISED OF THE POSSIBILITY OF SUCH DAMAGES AND EVEN IF A REMEDY SET FORTH HEREIN IS FOUND TO HAVE FAILED OF ITS ESSENTIAL PURPOSE.
- (b) SOME STATES DO NOT ALLOW THE LIMITATION OR EXCLUSION OF LIABILITY FOR INCIDENTAL OF CONSEQUENTIAL DAMAGES, SO THE ABOVE LIMITATION OR EXCLUSION MAY NOT APPLY TO YOU AND YOU MAY ALSO HAVE OTHER LEGAL RIGHTS THAT VARY FROM STATE TO STATE.
- (c) THE FOREGOING LIMITATIONS ON LIABILITY ARE INTENDED TO APPLY TO THE WARRANTIES AND DISCLAIMERS ABOVE AND ALL OTHER ASPECTS OF THIS AGREEMENT.

7. General

This Agreement shall be governed by the internal laws of the State of Minnesota, without giving effect to principles of conflict of laws. Should you have any questions concerning this Agreement, you may contact Toro at legal@toro.com

Toro and other trademarks contained in the Software are trademarks or registered trademarks of The Toro Company in the United States and/or other countries. Third party trademarks, trade names, product names and logos may be the trademarks or registered trademarks of their respective owners. You may not remove or alter any trademark, trade names, product names, logo, copyright or other proprietary notices, legends, symbols or labels in the Software.

YOU ACKNOWLEDGE THAT YOU HAVE READ THIS AGREEMENT, UNDERSTAND IT AND AGREE TO BE BOUND BY ITS TERMS AND CONDITIONS. YOU FURTHER AGREE THAT IT IS THE COMPLETE AND EXCLUSIVE STATEMENT OF THE AGREEMENT BETWEEN YOU AND TORO WHICH SUPERSEDES ANY PROPOSAL OR PRIOR AGREEMENT, ORAL OR WRITTEN, AND ANY OTHER COMMUNICATIONS BETWEEN US RELATING TO THE SUBJECT MATTER OF THIS AGREEMENT

