



Pump wear can be caused by a multitude of things from chemicals used, to maintenance schedule, to even the water content.



Proper Sprayer Maintenance

For more information and help on maintaining a Toro sprayer, please visit toro.com or contact your local distributor at 800-803-8676

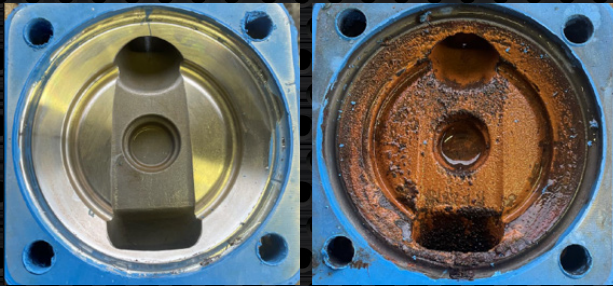


Count on it.

Lower Upkeep Costs and Extend Sprayer Life With This Useful Brochure

Damage Prevention

Proper maintenance prevents cavitation damage. Cavitation is the formation of gas bubbles within the spray system. When a bubble collapses, it creates a jet of energy that can damage the internal surfaces of the spray system. Overtime, cavitation can destroy the spray pump and other components of the spray system. Blockages in suction lines can cause cavitation and damage the pump.



Before and After Cavitation Damage

Cleaned filters can limit debris build up.

- Clean the sprayer
- Clean the suction filter
- Clean the pressure filter daily
- Condition the spray system yearly
- Calibrate the agitation bypass valve
- Clean the nozzle body & check-valve diaphragm

Mixing & Agitation

1. Prior to turning on the pump, load at least 30 gallons of water into the spray tank through the basket.
2. Turn on agitation, then turn on the pump.
3. Follow the chemical manufacturer's instructions when adding the product through the basket or the clean-load educator.
4. Continue agitating while adding water to the desired amount.

Water

- All water used for spraying should be put into the sprayer through the basket. It is highly discouraged to use reclaimed water in your sprayer.
- It can lead to wear as well as increased risk for chemical product incompatibility.

Chemicals

- Introduce chemicals to the spray system either through the basket or through the clean-load educator.
- Premix non-liquid-based chemicals in a slurry.
- When mixing more than one product to perform a jar test to make sure the products are compatible.

Resources

Filter Selection is just as important as cleaning the filter. Using the incorrect filter can lead to cavitation and premature pump wear. See bulletin VEH 01-01 on Toro.com or myTurf.com.



Long Term Storage, please see, "Six Tips to Get Your Equipment Ready for Winter Storage"



Inspection Interval information can be found in the Operators Manual on toro.com



Additional Help can be found on toroadvantage.com/category/sprayers/

