



## Operation

### Diesel Particulate Filter Regeneration

#### Parked Regeneration and Recovery Regeneration

##### Parked Regeneration

- The parked-regeneration requested icon displays in the InfoCenter (Figure 1).

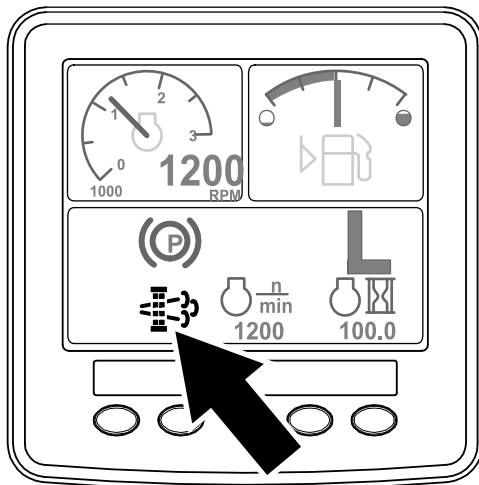


Figure 1

g214646

- If you ignore the request for a parked regeneration (displayed in the InfoCenter) and continue to operate the machine (Figure 2), a critical amount of soot may accumulate in the DPF.

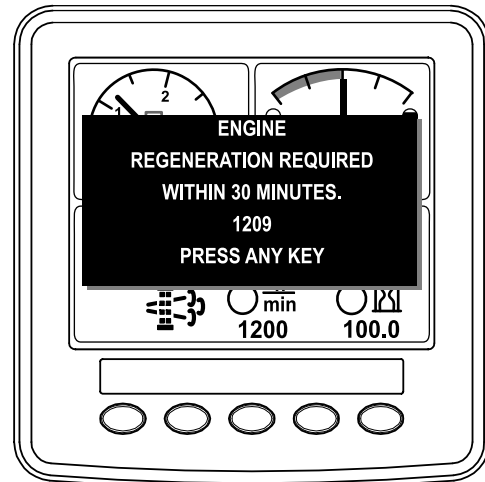


Figure 2

g214645

- If you are authorized by your company, you need the PIN code to perform the parked-regeneration process.

##### Recovery Regeneration

- The recovery-regeneration icon displays in the InfoCenter (Figure 3).

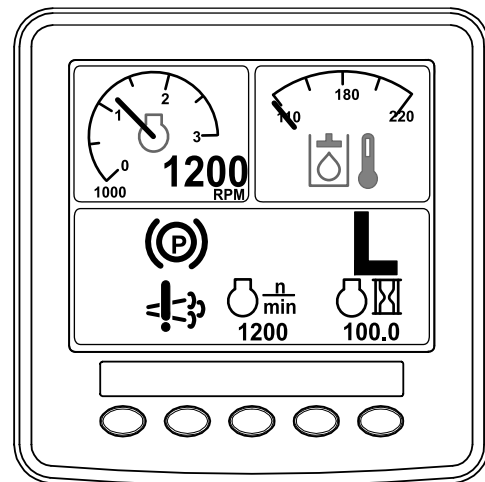


Figure 3

g214648

- If you ignore the request for a parked regeneration (displayed in the InfoCenter) and continue to operate the machine (Figure 4), a critical amount of soot may accumulate in the DPF.



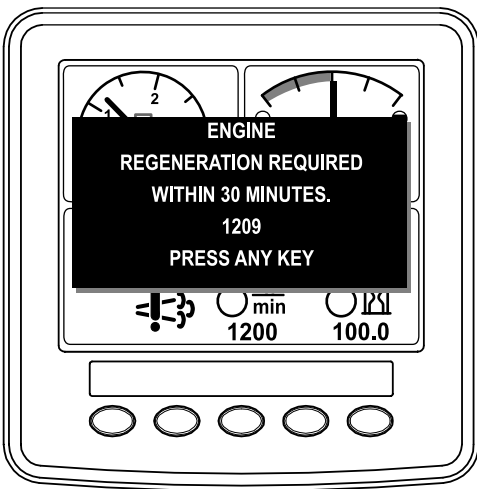


Figure 4

g214647

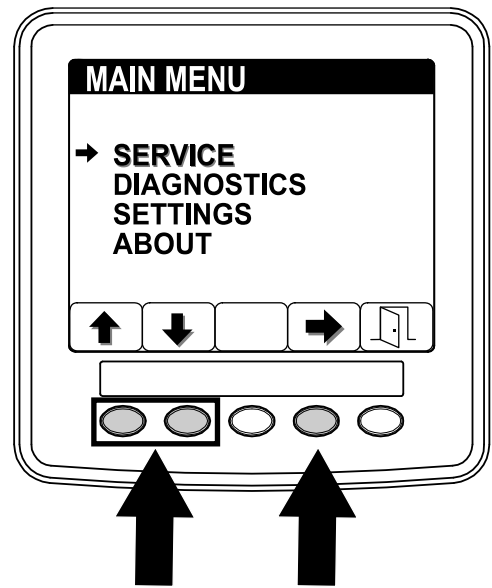


Figure 5

g214884

- If you are authorized by your company, you need the PIN code to perform the recovery-regeneration process.

### Preparing to Perform a Parked or Recovery Regeneration

- Ensure that the machine has fuel in the tank for the type of regeneration you are performing:
  - Parked Regeneration:** Ensure that you have 1/4 tank of fuel before performing the parked regeneration.
  - Recovery Regeneration:** Ensure that you have 1/2 tank of fuel before performing the recovery regeneration.
- Move the machine outside to an area away from combustible materials.
- Park the machine on a level surface.
- Ensure that the traction control or motion-control levers are in the NEUTRAL position.
- If applicable, lower the cutting units and shut them off.
- Engage the parking brake.
- Set the throttle to the low IDLE position.

### Performing the Regeneration

**Note:** For instructions on unlocking protected menus, refer to Accessing Protected Menus on the Software Guide for you machine.

- On the MAIN MENU, press button 1 or button 2 to navigate to the SERVICE option, and press button 4 to select the SERVICE entry (Figure 5).

- On the SERVICE menu, press button 1 or button 2 to navigate to the REGENERATION option, and press button 4 to select the REGENERATION entry (Figure 6).

If an UNAVAILABLE MESSAGE displays in the InfoCenter, perform the recommended actions described in the unavailable message table of (page ).

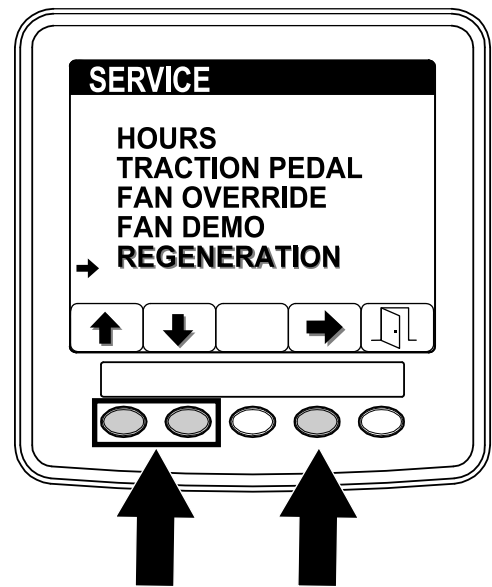


Figure 6

g214887

- On the regeneration screen, press button 4 to start the regeneration process (Figure 7).

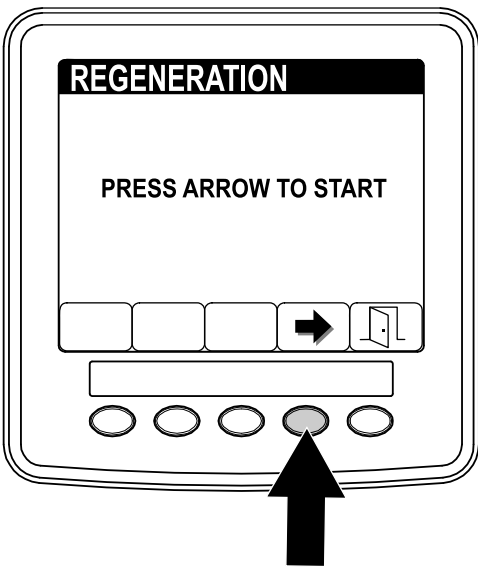


Figure 7

g214486

**Note:** If you press button 5 while the regeneration is processing, you will exit the regeneration process. At the EXIT screen press button 5 to return to the SERVICE menu (Figure 9).

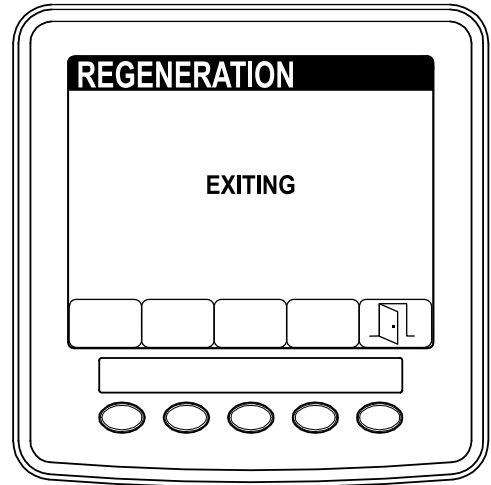


Figure 9

g214485

4. The InfoCenter displays a series of screens (Figure 8) as the regeneration processes:

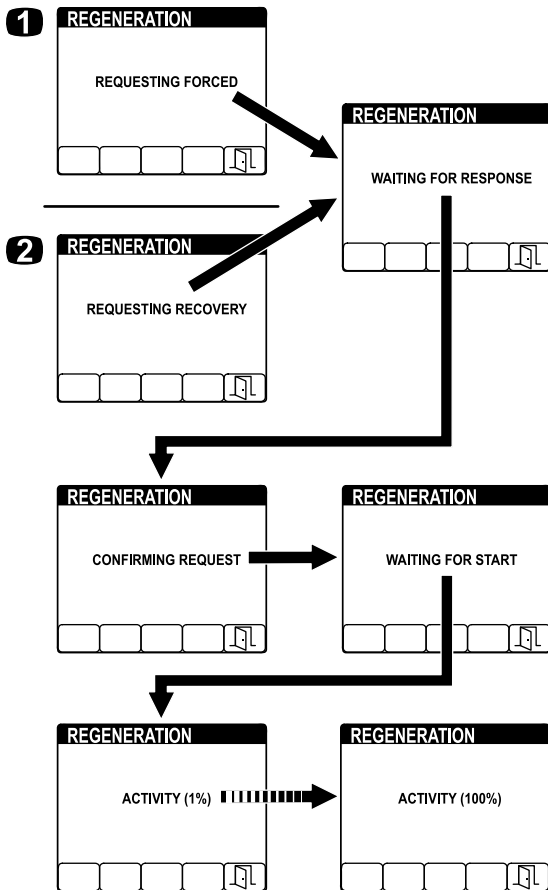


Figure 8

g214903

5. When regeneration completes, the COMPLETE screen displays in the InfoCenter. Press button 5 to return to the SERVICE menu (Figure 10).

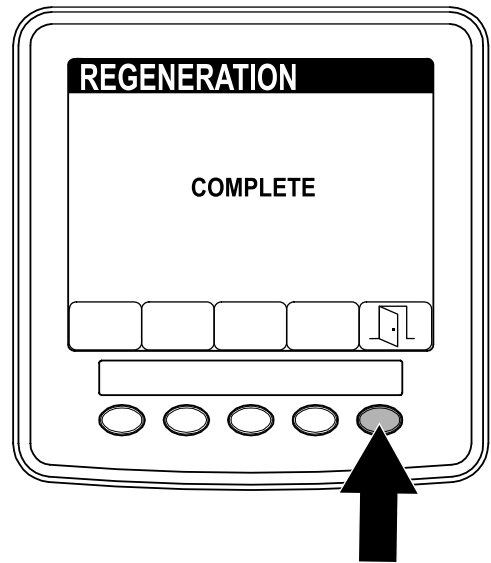


Figure 10

g214483

- 1. REQUESTING FORCED is displayed during a parked regeneration
- 2. REQUESTING RECOVERY is displayed during a recovery regeneration