



# NuSurface™ 470/790

## MULTI-PURPOSE TURF RENOVATION

### FEATURES

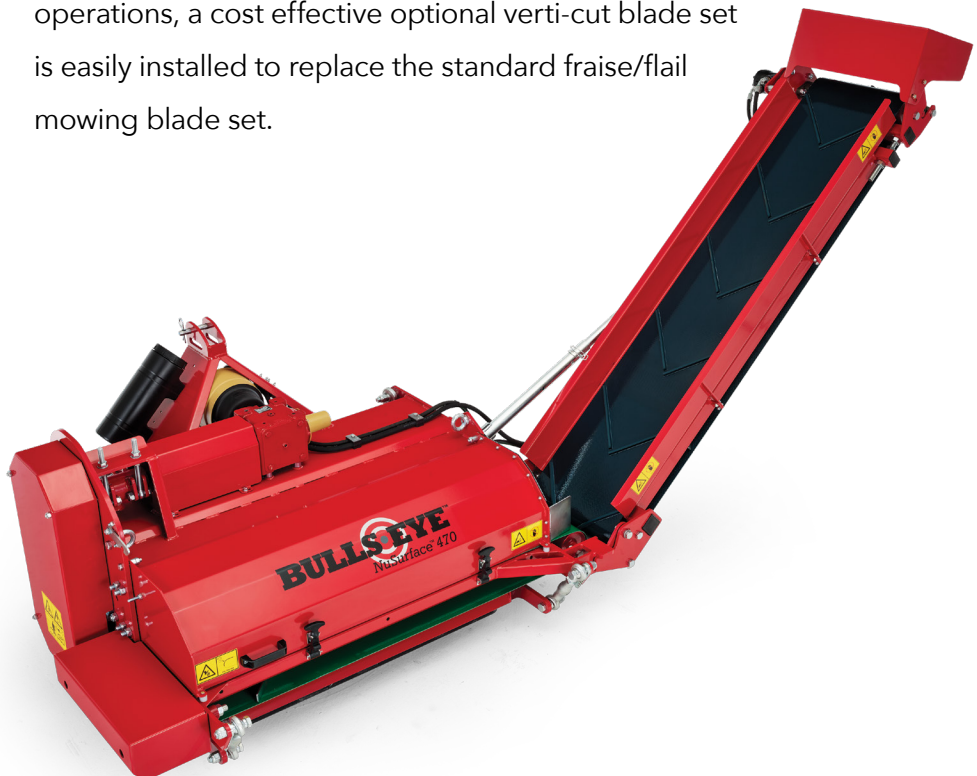
- Cost Effective, Multi-Purpose Turf Renovation - *verti-cut, flail mow or fraise mow and clean up in single pass*
- Operating Width Options - *47" or 79" (119 or 200 cm)*
- Multi-Purpose Blade Rotor - *simple blade change to switch between fraise or flail mow and verti-cut*
- Adjustable Height Conveyor - *works with most trailers or dump boxes*
- Full Width Front and Rear Rollers - *easily adjust depth and level machine on all four corners*
- Easy Access to Blade Area - *simplifies blade changes and cleaning*



## Highly Effective, Single-Pass Turf Renovation.

The Bullseye NuSurface 470 & 790 are used to fraise mow, flail mow, level, de-thatch, and renovate turf areas, as well as harvest sprigs. These products are ideal for use on golf courses and sports fields and are quickly becoming the go-to grass removal tool for fast and efficient resurfacing projects. It's rotary action removes material and transfers it onto a conveyor system for disposal, leaving behind a smooth surface, immediately ready for sod or seeding.

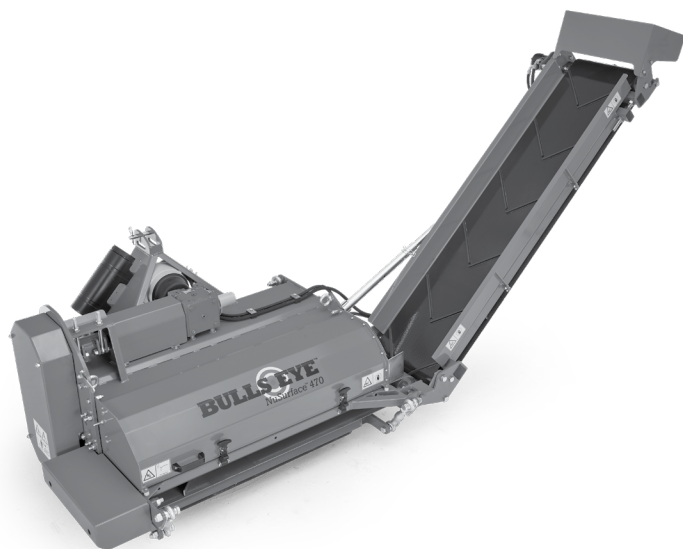
These machines are highly productive and can be adjusted in small increments for the desired level of aggressiveness. Rather than swapping out the entire blade mount rotor to change mowing operations, a cost effective optional verti-cut blade set is easily installed to replace the standard fraise/flail mowing blade set.





## NuSurface™ 470/790\*

The Bullseye NuSurface 470 & 790 are used to fraise mow, flail mow, level, de-thatch, and renovate turf areas, as well as harvest sprigs. These products are ideal for use on golf courses and sports fields and are quickly becoming the go-to grass removal tool for fast and efficient resurfacing projects. It's rotary action removes material and transfers it onto a conveyor system for disposal, leaving behind a smooth surface, immediately ready for sod or seeding. These machines are highly productive and can be adjusted in small increments for the desired level of aggressiveness. Rather than swapping out the entire blade mount rotor to change mowing operations, a cost effective optional verti-cut blade set is easily installed to replace the standard fraise/flail mowing blade set.



	BULLSEYE NUSURFACE 470, MODEL 46450	BULLSEYE NUSURFACE 790, MODEL 46452
<b>WORKING WIDTH</b>	47" (119 cm)	79" (200 cm)
<b>WORKING DEPTH</b>	Up to 2" (50.8 mm)	
<b>TRACTOR REQUIRED</b>	30-40 hp (22.4-29.8 kW) with minimum 1,709 lb. (775 kg) lift capacity	40-50 hp (29.8-37.3 kW) with minimum 3,640 lbs. (1650 kg) lift capacity
<b>VERTI-CUT BLADE SPACING</b>	0.8, 1.6, 2.4 or 3.2" (20, 40, 60 or 80 mm)	
<b>MAXIMUM WORKING SPEED</b>	1.8 mph (3.0 km/h)	
<b>THREE-POINT CONNECTION</b>	Category 1	Category 2
<b>HYDRAULIC CONNECTION</b>	One, double-acting valve	Two, double-acting valves
<b>PTO RPM</b>	540 RPM	
<b>NUMBER OF BLADES</b>	32	76
<b>STANDARD ITEMS</b>	PTO shaft, fraise/flail mow blade set	
<b>WEIGHT</b>	1,367 lbs. (620 kg)	2,908 lbs. (1319 kg)
<b>DIMENSIONS</b>	<b>Width</b> 73" (185.4 cm) <b>Height</b> 87" (220.9 cm) <b>Length</b> 62" (157.4 cm) With conveyor in transport/storage position.	<b>Width</b> 97" (246.3 cm) <b>Height</b> 45" (114.3 cm) <b>Length</b> 72" (182.8 cm) With conveyor in transport/storage position.
<b>WARRANTY</b>	One-year limited warranty. Refer to the Operator's Manual for further details.	

	BULLSEYE NUSURFACE 470 – ACCESSORIES	BULLSEYE NUSURFACE 790 – ACCESSORIES
<b>VERTICUT BLADE SET FOR 20 MM SPACING</b>	All components needed to convert rotor for verticutting at 20 mm blade spacing. Part # 145-7555	All components needed to convert rotor for verticutting at 20 mm blade spacing. Part # 145-7556

\*Specifications and design subject to change without notice. Products depicted in this literature are for demonstration purposes only. Actual products offered for sale may vary in design, required attachments and safety features. Consult your local Toro Distributor.

