

OPERATION

Attach the threaded tap connector to your tap and connect the **HydraCUBE Reel** inlet to the tap, using the supplied **Tap to Reel Hose**.

To operate, pull the hose out and stop pulling at the desired length. The hose will automatically lock in this position.

To further lengthen the hose, resume pulling.

To re-coil the hose, give a short pull to release the lock and the hose will automatically begin to retract. To stop the hose, give a short pull to lock again.

When retracting, keep hold of the hose and walk towards the reel until the hose is fully retracted. Letting go of the hose could result in injury.

It is recommended that you turn the water off at the tap before retracting the hose.

MAINTENANCE

When not in use for long periods, it is recommended that you store your hose in a covered area.

TECHNICAL SPECIFICATION

Hose Diameter	12mm (½")
Hose Material	PVC
Tap Fitting	20mm (¾") – 25mm (1") BSP
Maximum water pressure	1,200 kPa

WARRANTY

This Pope hose has a 7 year guarantee against defects in material and workmanship when used in normal home gardening applications. Our obligation under this guarantee is limited to the replacement of the product at our discretion. The hose reel, fittings and components are guaranteed for a period of 2 years from the date of purchase. In the event of a claim, you must immediately cease using the product and return, together with your proof of purchase and an explanation of the fault to the store you purchased it from. All costs associated with the return of the product are your responsibility.

Our goods come with guarantees that cannot be excluded under the Australian Consumer Law. You are entitled to a replacement or refund for a major failure and for compensation for any other reasonably foreseeable loss or damage. You are also entitled to have the goods repaired or replaced if the goods fail to be of acceptable quality and the failure does not amount to a major failure. In the interest of better quality and value, we are constantly improving our product. Consequently, the picture on this packaging may sometimes differ from the model enclosed.

Made to Toro Australia Pty Ltd's specification in China.



HydraCUBE Auto Wind Hose Reel



OWNER'S MANUAL

WARNING

Read this Manual carefully before use.







Not intended for use by children.

INTRODUCTION

The Pope GroPro Series is a premium range of garden watering products created to deliver exceptional performance. The Pope GroPro HydraCUBE is a multi-application auto-wind system which can be mounted on your wall, deck or lawn. Its slow and smooth rewind speed and wide pivot range make it easy to use and keep both your hose, and garden, tidy. The modern GroPro design not only looks good, it feels good. With slick ergonomics, functionality and extended warranty as standard, the GroPro Series is sure to enhance your garden.

ACCESSORIES

Your HydraCUBE Auto Wind Hose Reel includes the following mounting and hose accessories.

<p>Wall Mounting Bracket (1)</p> 	<p>Fitting Tube (1)</p> 
<p>Anchor Plugs (4) and Screws (4)</p> 	<p>Ground (lawn) Mounting Pins (4) (shipped inside the reel)</p> 
<p>Spray Nozzle (1) and Tap Connector (1)</p> 	<p>1.5m Tap to Reel Hose (1)</p> 

WALL MOUNTING

Choose a suitable position on your wall, close to a water tap. The supplied **Tap to Reel Hose** is 1.5m long.

Mark and drill four (4) holes to correspond with the positions of the holes in the **Wall Bracket**.

If you are mounting to a brick or masonry wall, use an 8mm masonry bit and drill 4 holes to suit the plastic anchor plugs provided. Insert the



anchors into the wall. All four holes should be drilled into brick and not into the mortar.

If mounting to a timber frame wall, use a stud finder to locate a stud and drill holes to suit the screws provided. In this instance, the anchor plugs are not required.

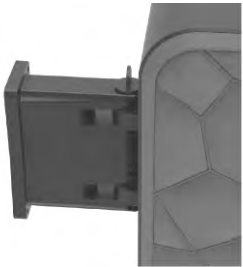
Screw the mounting bracket to the wall.

WARNING

If your wall is clad with asbestos cement sheet, seek professional advice before drilling.

Open the brackets on the back of the reel.

Align the holes in the hose reel brackets with those in the **Wall Bracket** and insert the **Fitting Tube** through the bracket and reel.



GROUND MOUNTING

Turn the reel over, remove the three screws on the doors, and open the doors. Remove the four **Ground Mounting Pins** from inside the reel.



Fold back the doors and turn the reel over, sitting it flat on the ground with the doors open. Push the four **Ground Mounting Pins** through the holes in the doors and into the ground, pinning the reel down. If mounting to a deck, use 4 appropriately sized timber screws (not supplied) and screw through the 4 door holes into the timber. Pilot holes may be required.

