

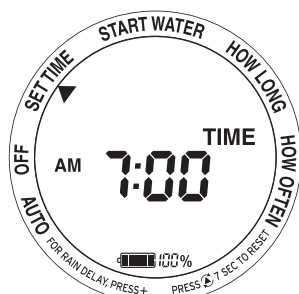
BATTERY INSTALLATION

Pull out the battery holder from the back of the timer and insert two (2) AA Alkaline batteries, making sure that the orientation is as shown on the diagram in the holder. Re-insert the battery holder.

Please change fresh batteries if the battery status become 0% Do not use rechargeable batteries.

1 SET TIME

Press to turn the timer on. Use the and buttons to set the clock to the correct time. When using the and buttons, hold them down to scroll faster.



Press to save the time setting and move to **START WATER** mode.

3 HOW LONG



Use the and buttons to set the desired watering duration, up to a maximum of 360 minutes.

Press to save the watering start time and go to **HOW OFTEN** mode.

2 START WATER



Use the and buttons to set the time that you want watering to start.

Press to save the watering start time and go to **HOW LONG** mode.

4 HOW OFTEN

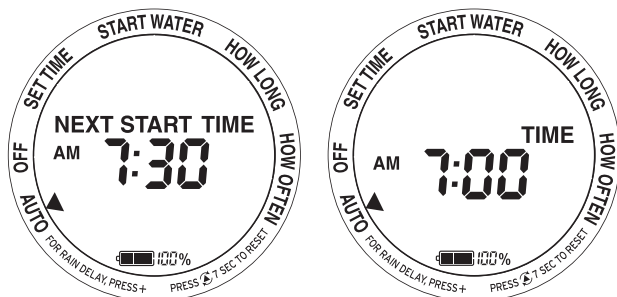


Use the and buttons to set how often your garden will be watered. You can water every 1, 2, 4, 6, 8, or 12 hours, or every 1, 2, 3, 4, 5, 6 or 7 days.

Press to save the watering start time and go to **HOW LONG** mode.

5 AUTO

The current time and next start time will display alternately, changing every 5 seconds.

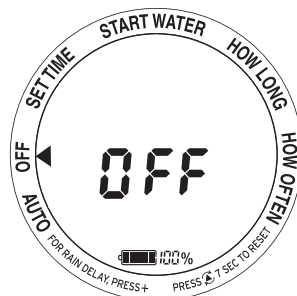


If **HOW OFTEN** is set to 2 days or more, the next start time will be displayed as a number of days.



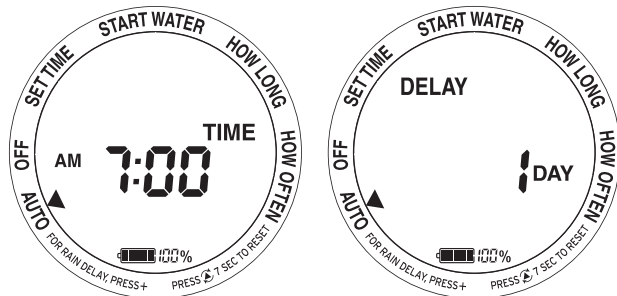
6 SET AUTO PROGRAM OFF

To turn the auto program off, press **OFF**.



7 RAIN DELAY

If rain is forecast, you can program the timer to delay its automatic cycle for a period of 12 hrs or 1, 2, 3, 4, 5, 6 or 7 days. Press **DELAY** until the timer enters **AUTO** mode, press **▶** to select **DELAY**, then use the **◀** and **▶** buttons to select the desired delay.

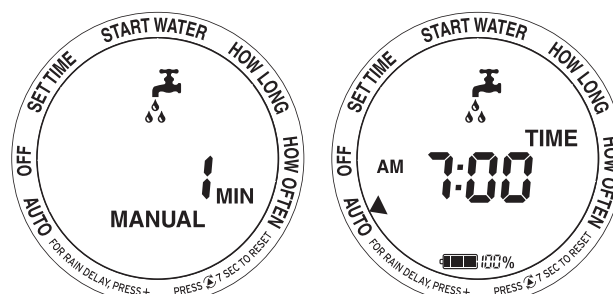


8 MANUAL WATERING

Press **MANUAL ON/OFF** to go to **MANUAL WATERING** mode and use the **◀** and **▶** buttons to select the watering duration time, to a maximum of 360 minutes, then press **▶** to start watering.



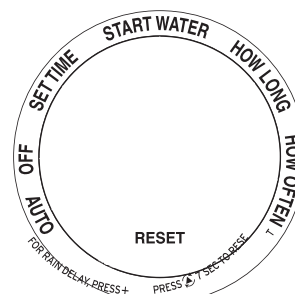
The current time and watering time remaining will display alternately, changing every 5 seconds.



To stop manual watering, press **MANUAL ON/OFF**.

9 RESET

To **RESET** the timer to the manufacturer's factory settings, press and hold the **RESET** button for 7 seconds. This will erase all of your settings and you will need to set up all of the options again.



CARE AND MAINTENANCE

1. For outdoor use only.
2. Maximum operating water pressure: 1000kPa.
3. Operating water temperature range: 0°C to 38°C.
4. To store the timer when not in use:
 - a. Turn off the tap and remove the timer
 - b. Set the timer to Manual to open the valve and empty out all of the water
 - c. Remove the batteries
 - d. Dry the timer and store in a dry place.